

Pico, Rombini, Punto, Pico Bois, Bloc  
by Ronan & Erwan Bouroullec

# Technical Features

**Mutina**

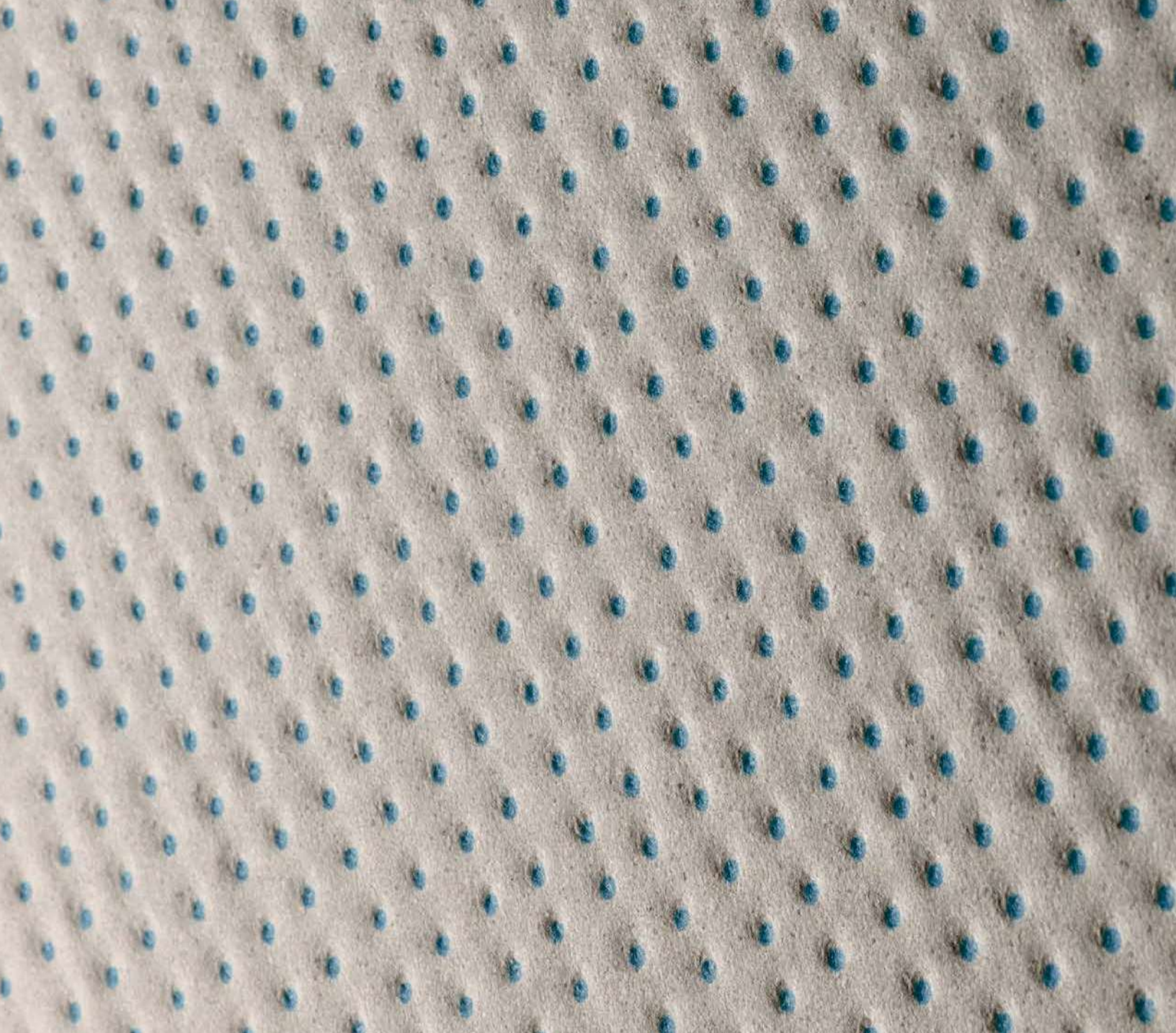
F

Ron

P

Pico

E



# P


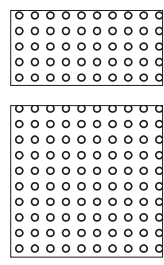
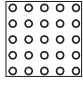
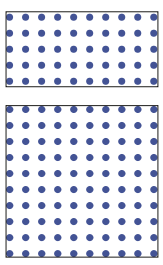

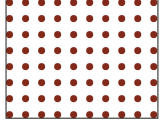


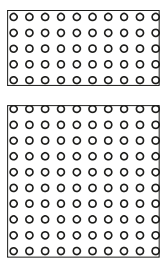
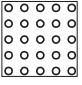

Nell'ideazione di Pico, lo sforzo è stato interamente volto alla definizione di un prodotto che unisse regolarità e irregolarità, giungendo così alla declinazione in due superfici: Down, con punti scavati e Up, con punti a rilievo. Per rendere l'effetto ancora più vibrante, è stato deciso di utilizzare il rosso e il blu sotto forma di puntini su un fondo neutro o come colori di base. Con la nuova edizione di Pico, alle colorazioni Blanc e Gris si aggiungono Argille, realizzata con gli stessi materiali e la stessa tecnologia delle varianti già esistenti, e Pico Satin, ottenuta con l'ausilio della tecnologia CONTINUA e di uno smaltato satinato atomizzato, che hanno permesso di ottenere una superficie morbida e piacevole al tatto, di un grado di bianco assoluto.

In questo modo, grazie ai giochi cromatici e alla speciale miscela utilizzata, che conferisce al prodotto un caratteristico effetto di morbidezza e matericità.

# General information

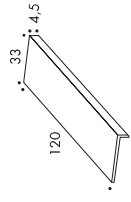
collection	Pico
design	Ronan & Erwan Bouroullec, 2011, 2015, 2021
production	Industrial
material	Unglazed homogeneous porcelain stoneware
features	Squared and rectified slabs each one exactly the same as the others
thickness	12 mm
nominal sizes	120-120 cm (47". 47") 60-120 cm (24". 47") 60-60 cm (24". 24")
specification	<ul style="list-style-type: none"> <li>- 3 base colors: Blanc, Gris, Argile</li> <li>- Pico Satin: double charge extra white dry glaze applied with Continua technology</li> <li>- 2 relief and bas-relief 1,5 mm dotted textures (UP and DOWN)</li> <li>- The colors are a mix of slightly different colored body, a rich mixture to guarantee a natural effect. This mix is pressed with Continua technology after the decoration. This is the only possible way to synchronize the 2 texture Up and Down with the colored dots. The silk-screen decoration technology allow to obtain deep color, not possible by digital application.</li> </ul>
use	Wall and floor - outdoor and indoor
complementary pieces	Step, Corner tile, Skirting
awards	Red Dot Design Award 2012, Selected for Adi Design Index 2012
patents	Registered design n° 001912999-0011 - date of registration: 06/09/2011
category	UNI EN 14411 App G (BIA group) UGL

# Sizes

PICO DOWN		section
down natural		60-120 cm 24". 47"
		60-60 cm 24". 24"
blue dots		60-120 cm 24". 47"
		60-60 cm 24". 24"
red dots		120-120 cm 47". 47"
		60-60 cm 24". 24"
PICO UP		section
up natural		60-120 cm 24". 47"
		60-60 cm 24". 24"
up		120-120 cm 47". 47"

complementary pieces

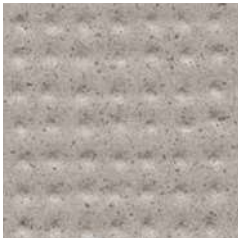
step  
33-120-4,5 cm  
13". 47". 17/8"



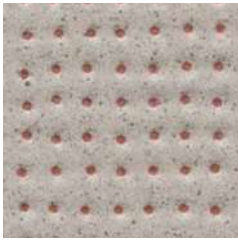
corner tile  
33-120-4,5 cm  
13". 47". 17/8"

# Colors

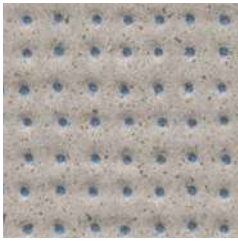
GRIS



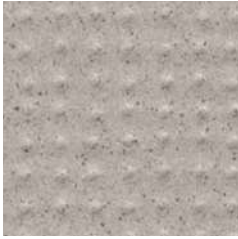
Down Natural



Red Dots



Blue Dots

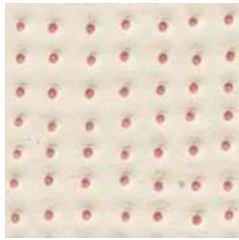


Up Natural

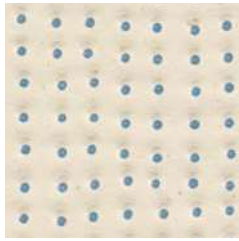
BLANC



Down Natural



Red Dots



Blue Dots

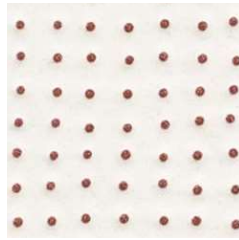


Up Natural

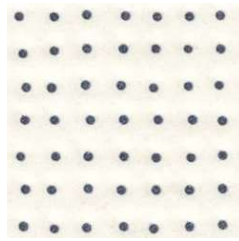
SATIN



Down Natural



Red Dots

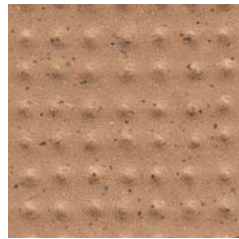


Blue Dots

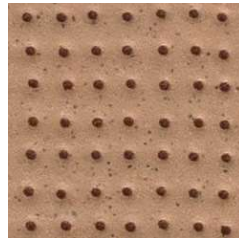


Up Natural

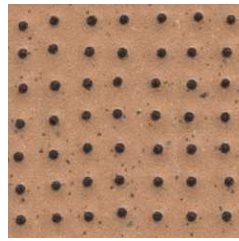
ARGILE



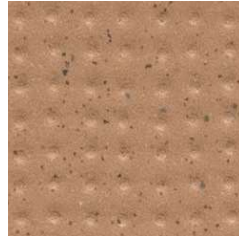
Down Natural



Red Dots



Blue Dots

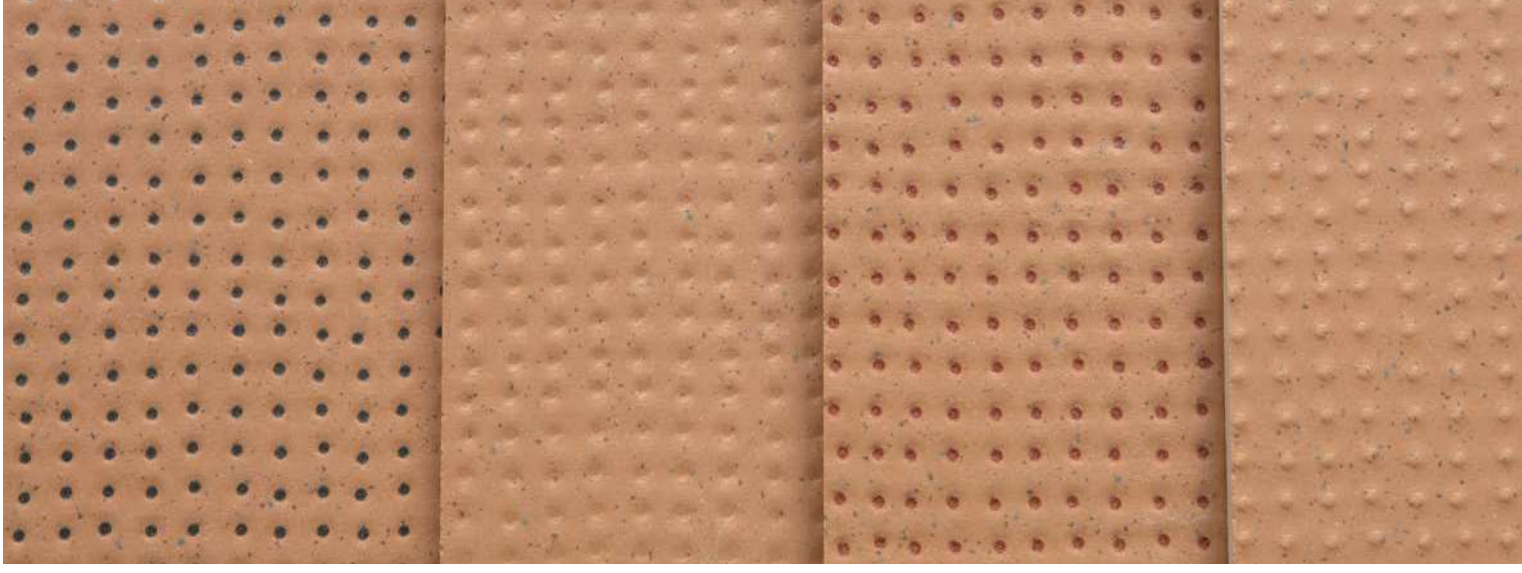


Up Natural

BLUE




RED



## Technical features

## Packing

STANDARD	FEATURES	VALUE REQUIRED	PICO
ISO 10545/2	SIZES length and width thickness straightness of edges wedging flatness	± 0,6% ± 5% ± 0,5% ± 0,6% ± 0,5%	in conformity with standard
ISO 10545/3	water absorption	< 0,5%	0,06%
ASTM C373		< 0,5%	0,06%
ISO 10545/4	breaking strength	≥ 35 N/mm	61,2 N/mm <sup>2</sup>
ISO 10545/6	resistance to deep abrasion	<175 mm <sup>3</sup>	in conformity
EN 101	surface hardness (scala mohs)	> 5	8
ISO 10545/9	resistance to thermal shock	no visible alteration	resistant
ASTM C484		no samples must show visible defects	unaffected
ISO 10545/12	frost resistance	no visible alteration	resistant
ASTM C1026		unaffected	unaffected
ISO 10545/13	resistance to chemical attacks	no visible alteration	resistant
ASTM C650		unaffected	unaffected
ISO 10545/14	stains resistance	minimum 3	4 – 5
DIN 51130-04	slip resistance	medium values 6÷10° R9 10÷19° R10 19÷27° R11 27÷35° R12 > 35° R13	UP R11 DOWN R11
DIN 51097			UP B DOWN A
DCOF		> 0,42	UP 0,59 DOWN 0,70
Pendulum BS7976-2			UP 53 dry - 38 wet DOWN 49 dry - 31 wet
LEED CERTIFICATION 4.1			20% recycled material
ENVIRONMENTAL MANAGEMENT SYSTEM ISO 14000 E ISO 9001			
			available upon request
VOC Emission			available upon request
Declaration of Contents			available upon request
EPD			available upon request

SIZE	PCS-SQM	SQM-PCS
120-120 cm	0,69	1,44

SIZE	PCS-SQM	PCS-BOX
60-120 cm	1,38	2
60-60 cm	2,77	3
step 33-120-4,5 cm	-	2
corner tile 33-120-4,5 cm	-	1
skirting 3,8-60 cm	-	10

## CREDITS

Art Direction: Alla Carta Studio

Graphic design: Matteo Pastorio

Text: Mutina

Photography: Studio Bouroullec,

Delfino Sisto Legnani, Modofotografia

Printed and bound in Italy. September 2021.

All the rights are reserved.

Not any part of this work can be reproduced in any way without the preventive written authorization by Mutina. All work is copyrighted © to their respective owners.

To discover more about Mutina collections visit [mutina.it](http://mutina.it)

Ceramiche Mutina Spa

Via Giarola Nuova 16

41042 Fiorano MO, Italia

T +39 0536812800

F +39 0536812808

[info@mutina.it](mailto:info@mutina.it)

[www.mutina.it](http://www.mutina.it)

© Mutina 2021

