

CERSAIE 2010

GOUACHE.10

DESIGN DIEGO GRANDI

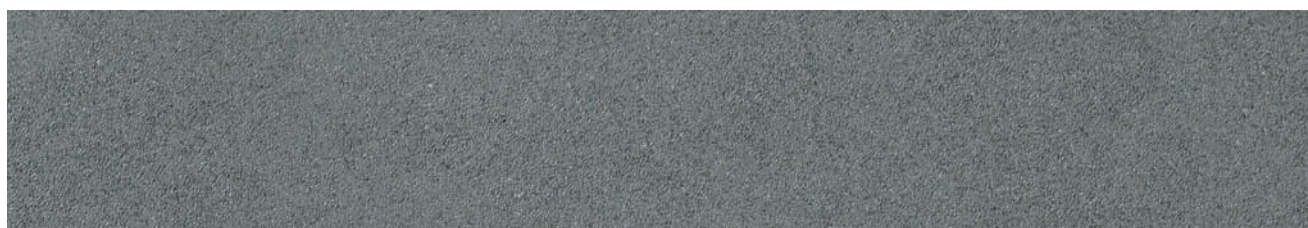
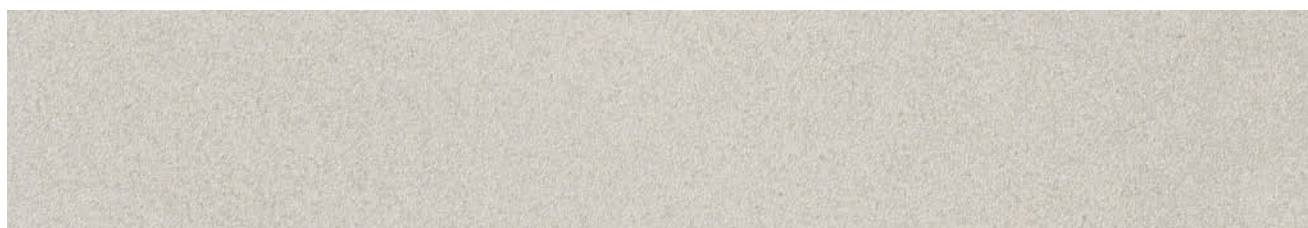
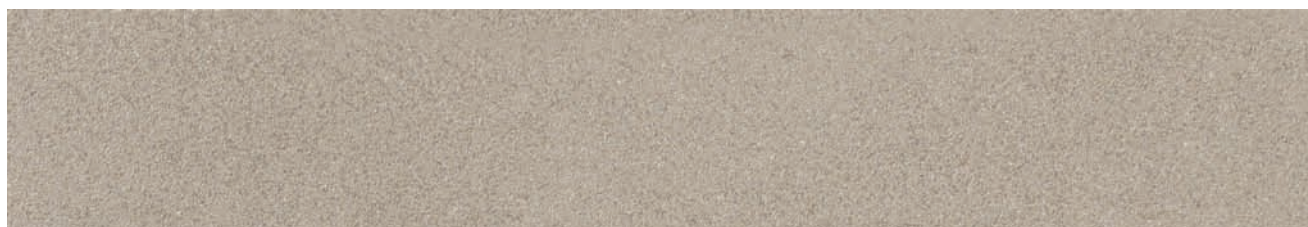
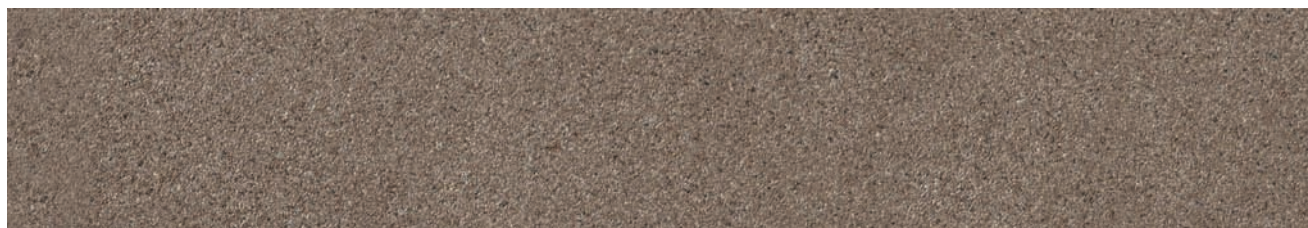


LEA
SLIMTECH

La collezione Gouache, rappresenta un nuovo approccio alla lastra ceramica sottile. Il supporto Slimtech viene affrontato per la prima volta dal punto di vista della ricerca cromatica e degli effetti tattili della superficie.

La tavolozza Gouache. 10, che inaugura la collezione, presenta una rosa di sette colori imperniati su un neutro che bilancia tre nuances calde e tre fredde. La superficie, nell'inedita versione douce, ha una mano vellutata, morbida, dal tatto caldo, dettaglio assolutamente nuovo nel settore del prodotto ceramico tecnologico.

Our collection Gouache is the result of a new approach to thin ceramic slate Slimtech, that for the first time involves a research on colours and touch effects. Gouache. 10 is the first colour palette, that opens this project: it has a neutral pivot colour that matches with three warm and three cool shades. Moreover, the optional Douce surface finishing adds a special soft, warm touch feeling which is an unusual detail for new, hight tech ceramic tiles.





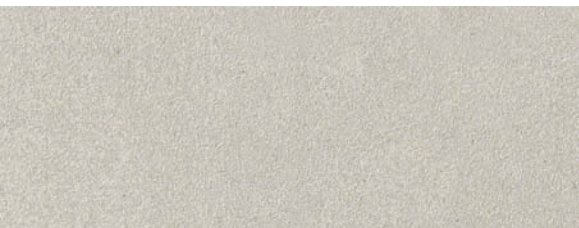
black stone



light rock



soft sand



white cloud



crystal water



cool rain

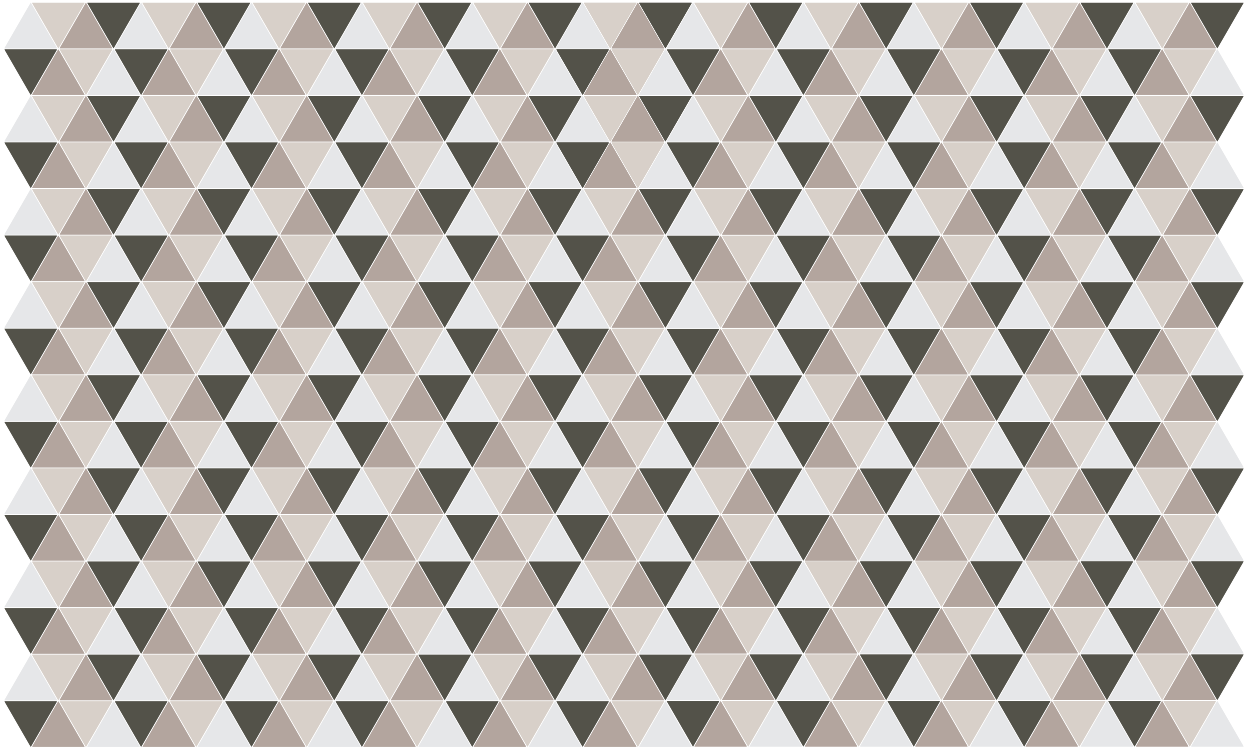


deep sea

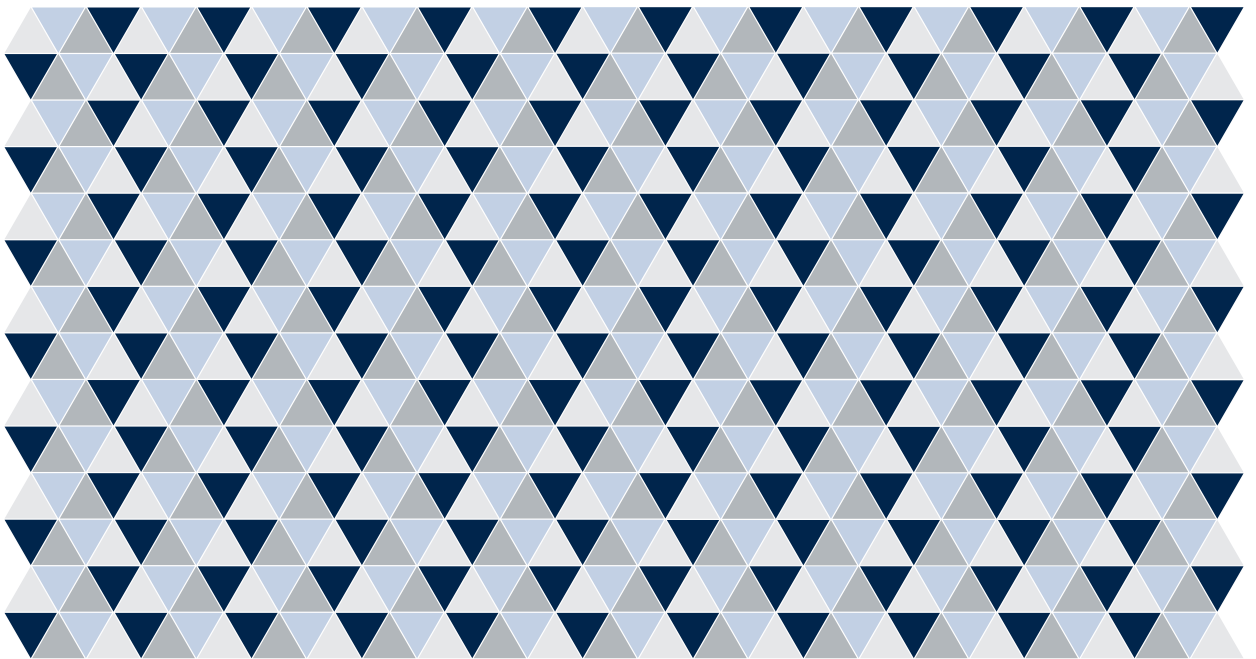




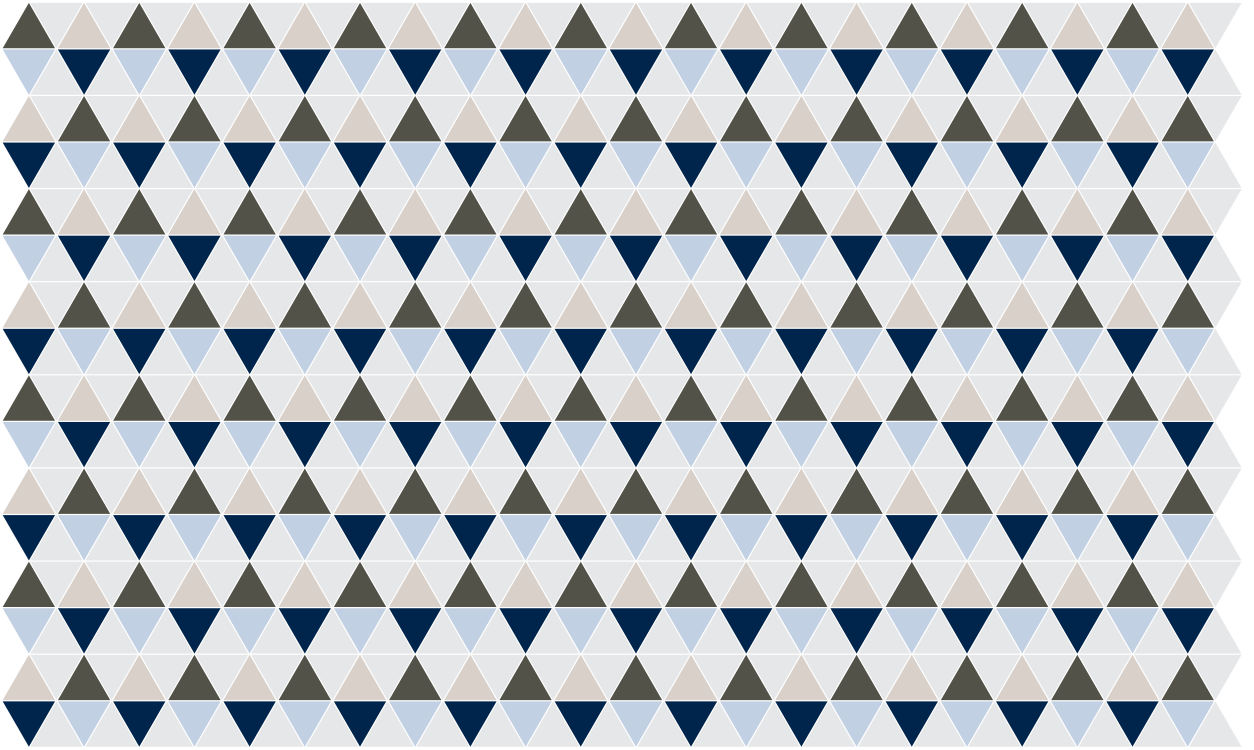
libeccio 01WARM



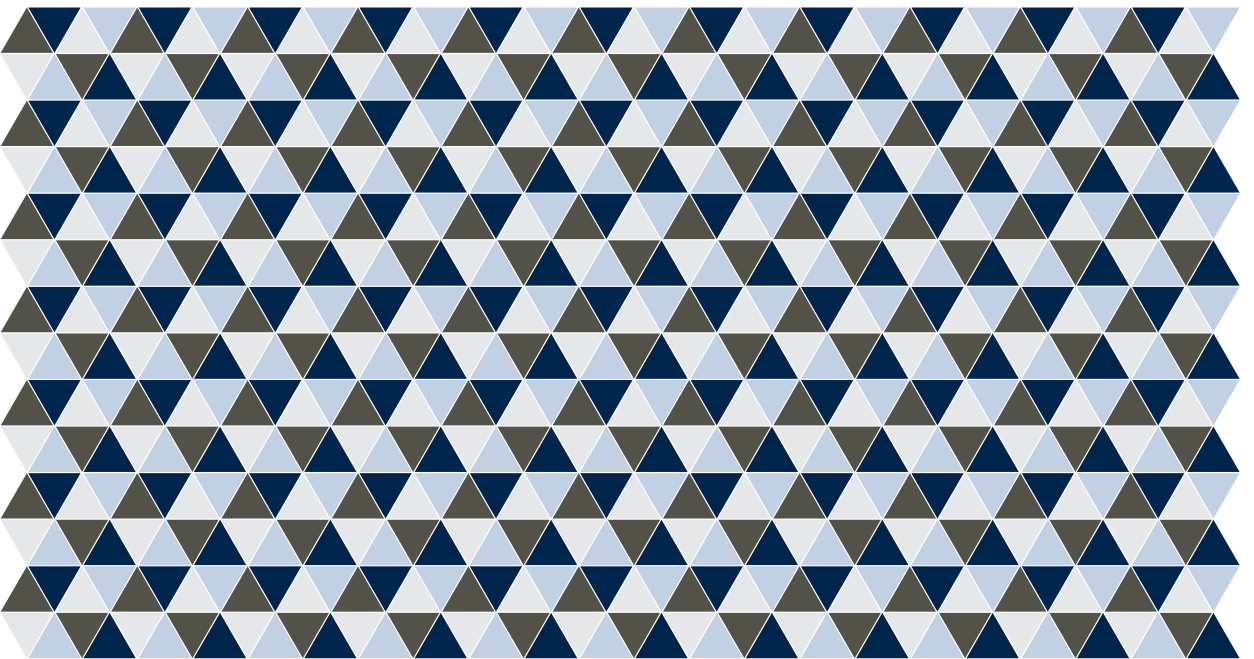
libeccio 01COOL



libeccio 02



libeccio 03



black stone



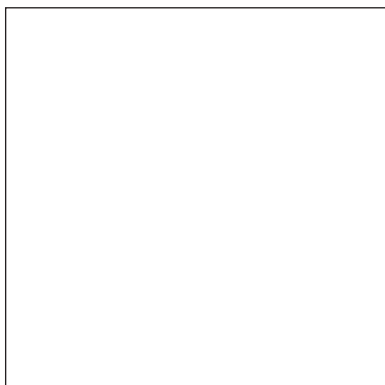


• **FORMATI e DECORI / sizes and decors**

disponibile in tutti i colori / available in all colours



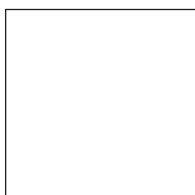
100x300cm / 118.1x39.4" - slimtech, slimtech plus



100x100cm / 39.4x39.4"
slimtech, slimtech plus, slimtech plus douce



100x50cm / 39.4x19.7"
slimtech, slimtech plus, slimtech plus douce



50x50cm / 19.7x19.7"
slimtech, slimtech plus, slimtech plus douce

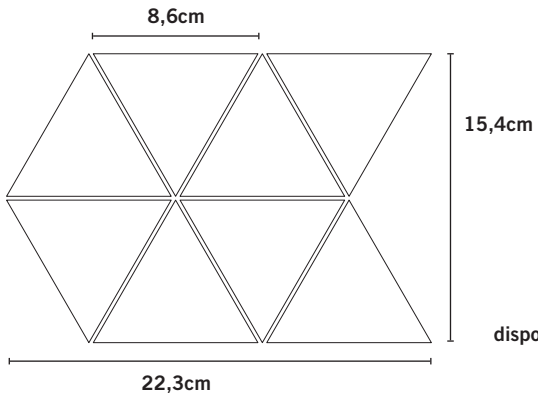


4,9x100cm / 1.9x39.4"
slimtech



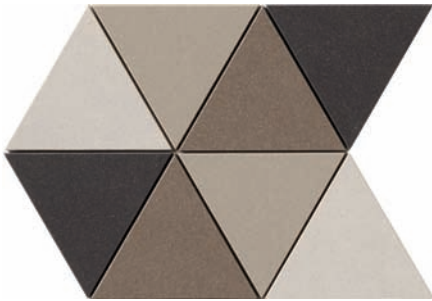
Ceramic Tiles of Italy

• DECORO LIBECCIO

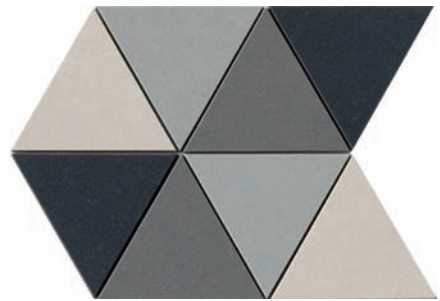


disponibile in tutti i colori / available in all colours

libeccio 01WARM



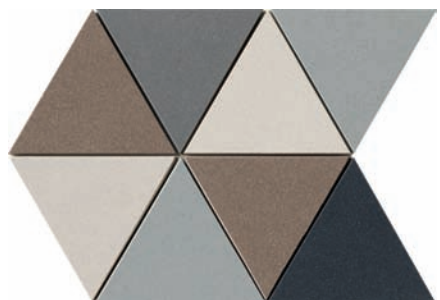
libeccio 01COOL



libeccio 02



libeccio 03



Diego Grandi

Vive e lavora a Milano, dedicandosi in particolare al surface, all'interior e all'exhibit design. Affianca all'attività di designer quella di docente presso università e scuole di design. Partecipa ad esposizioni e mostre in Italia e all'estero. Con la collezione di tappeti satellitari "Mapper" e con il progetto di carte da parati "Le Module", ispirato alle piante architettoniche di Le Corbusier, inaugura una ricerca nel campo del visual design. Nel 2002 crea DGO, studio di progettazione che si occupa di interior, product e design consultancy.

L'attenzione all'aspetto superficiale e visuale del design, determina un approccio attraverso la ricerca sul valore epidermico dei materiali e sulle possibili declinazioni e contaminazioni. In parallelo le connotazioni sociologiche dei progetti traggono spunto dall'osservazione costante dei comportamenti contemporanei. L'esito di un progetto assume valori dove bidimensionale e tridimensionale sono limitrofi, definendo un nuovo codice dell'abitare.

Collabora con Lea Ceramiche dal 2003 disegnando collezioni di piastrelle e progettando allestimenti, installazioni ed inoltre lo showroom di Milano. Tra i prodotti, le texture "Legno e Pelle" sono state incluse nell'Adi Design Index 2005, la piastrella City nel 2008 ha ricevuto il Good Design Award assegnato dal Chicago Athenaeum ed è stata inserita nell'Adi Design Index, la collezione Mauk ha ricevuto la candidatura agli Edida 2009 nella categoria wallcovering da Elle Decor Italia.

He lives and works in Milan, where he got a degree in Architecture and has been working since 1997. As a designer he is specialized in surface, interior and exhibition design. Besides, he is a teacher and lecturer in many Italian universities and design schools. He takes part in shows and exhibitions in Italy and abroad. He started a research in the visual design world, by designing the "Mapper" collection of satellite carpets and "Le Module" project of wallpaper, inspired by Le Corbusier architectural plans. In 2002 he set up DGO, a design studio of interior, product design and visual consultancy.

His approach to design is based on a research about surfaces and visual values of "skin" as protection, shell and interface of materials and objects and their possible declinations and combination. Results are often a balance of 2d and 3d connotations. Moreover a constant eye kept on contemporary society and its mutable behaviours lead the projects on a sociological path.

He works with Lea Ceramiche since 2003: as product designer he designed Legno, Pelle, Studies, City/Streets, Mauk and as an architect he designed many installations and Milan showroom. "Legno e Pelle" (wood and leather) were included in the Adi Design Index 2005; In 2008 "City" tile received the Good Design Award by Chicago Athenaeum and was included in "Adi Design Index 2008". Mauk was nominated for Edida 2009 as best wallcovering by Elle Decor Italia.

LEA

SLIMTECH

LEA CERAMICHE
Via Cameazzo, 21
41042 Fiorano Modenese
Modena Italy

Tel. +39 0536 837811
Fax +39 0536 830326
info@ceramichelea.it
www.ceramichelea.com
