

ARCHISTONE

 CERDISA



Floor _ Archistone Lightstone 60x60 nt rt

Sizes | Formati | Formats | Formate | Formatos | Φορματί



60x120
24"x48"



60x60
24"x24"



30x60
12"x24"

Colors | Colori | Couleurs | Farben | Colores | Цветов



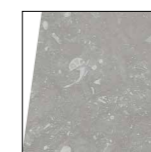
Limestone
Bianco



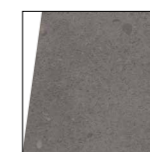
Limestone
Crema



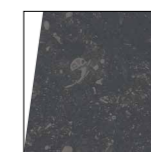
Pietra di
Bavaria



Lightstone



Grafite



Darkstone

ARCHISTONE



Floor Outdoor _ Archistone Limestone Crema 60x60 grp rt
Floor Indoor _ Archistone Limestone Crema 60x60 nt rt

ARCHISTONE



Floor _ Archistone Darkstone 60x60 grp rt



Floor Outdoor _ Archistone Grafite 60x60 grp rt
Floor Indoor _ Archistone Grafite 60x60 nt rt

ARCHISTONE



Floor Outdoor _ Archistone Limestone Crema 60x120 grp rt, Gradone costa retta Archistone Limestone Crema 33x60x3,2x3 grp, Angolo gradone costa retta Archistone Limestone Crema 33x33x3,2x3 grp
Floor Indoor _ Archistone Limestone Crema 60x120 nt rt

ARCHISTONE



Floor _ Archistone Limestone Bianco 60x60 grp rt

ARCHISTONE



A system of surfaces for architecture that offers a fresh take on the beauty of natural stone.

Sistema di superfici per l'architettura che interpretano la bellezza delle pietre naturali.

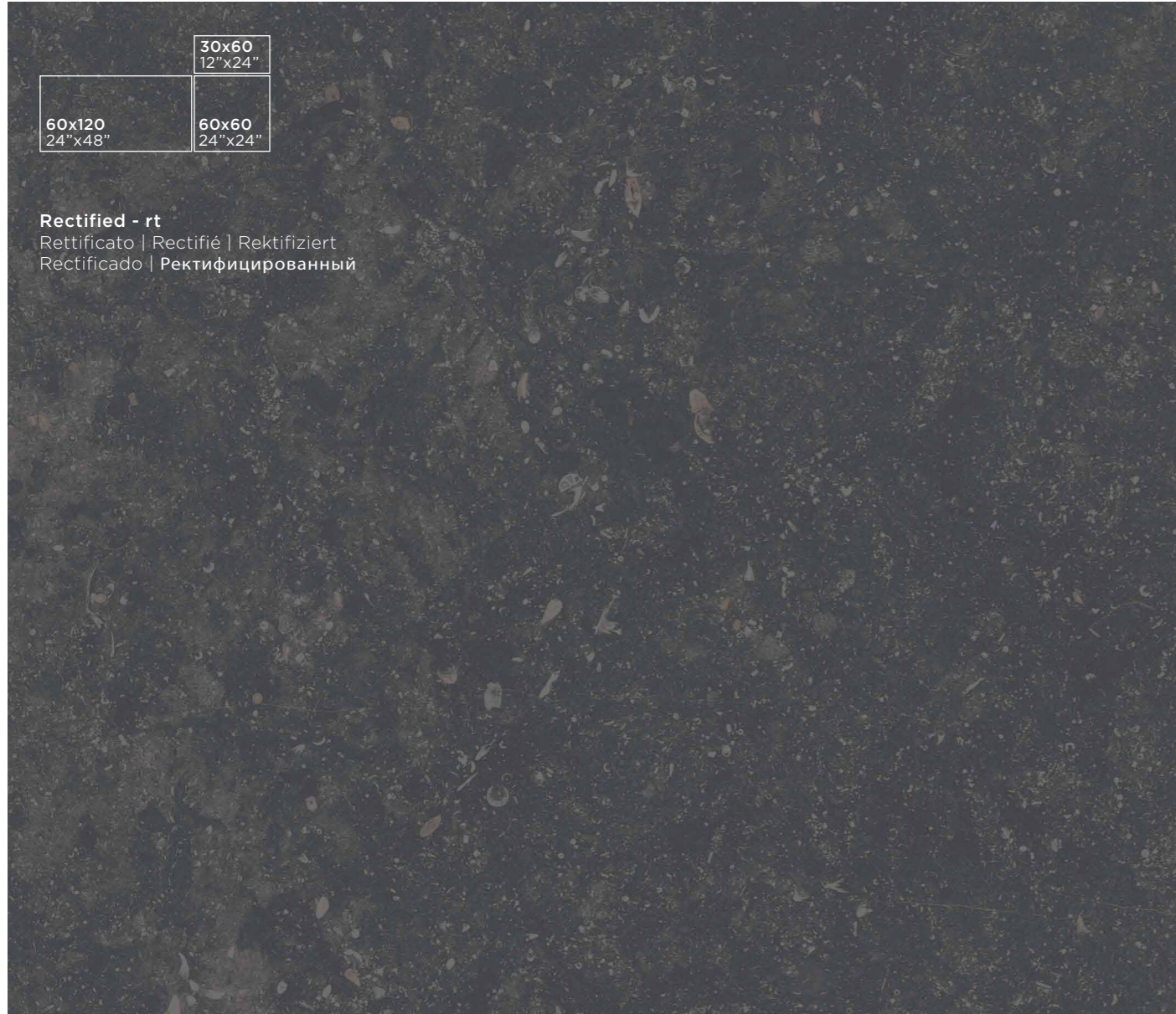
Des systèmes de surfaces pour l'architecture qui interprètent la beauté des pierres naturelles.

Ein System von Oberflächen für die Architektur, das die Schönheit der Natursteine neu interpretiert.

Sistema de superficies para la arquitectura que interpretan la belleza de las piedras naturales.

Система облицовочной плитки для архитектуры, передающая красоту натурального камня.

Floor _ Archistone Pietra di Bavaria 60x120 nt rt



30x60
12"x24"

60x120
24"x48"

60x60
24"x24"

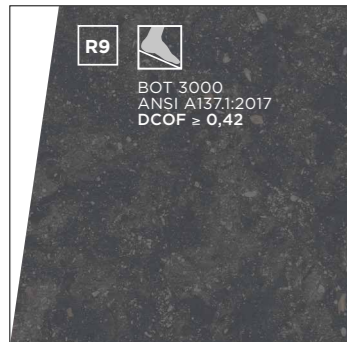
Rectified - rt
Rettificato | Rectifié | Rektifiziert
Rectificado | Ректифицированный

Colorbody fine porcelain stoneware | Gres fine porcellanato colorato in massa
Grès cérame fin coloré dans la masse | Durchgefärbtes Feinsteinzeug
Gres porcelánico fino coloreado en masa | Гомогенный мелкозернистый Керамогранит

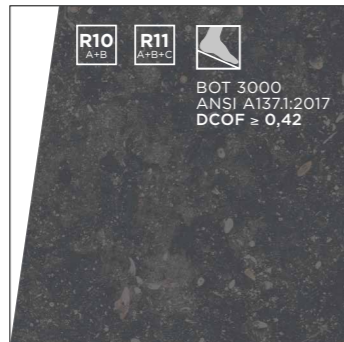
EN 14411-G Bia

Finishes

Superfici | Surfaces | Oberfläche | Superficies | Поверхности



Natural - nt
Naturale | Naturel
Naturbelassen | Natural
Натуральная



Grip - grp
Antisdrucchio | Antidérapant
Rutschhemmend | Agarre
Противоскользящая

R10 A+B
Darkstone
Lightstone
Pietra di Bavaria

R11 A+B+C
Limestone Bianco
Limestone Crema
Grafite



60x120 nt / grp U4 P3 E3 C2
60x60 nt / grp U4 P4+E3 C2
30x60 nt / grp U4 P3 E3 C2
(NO color Limestone Bianco)

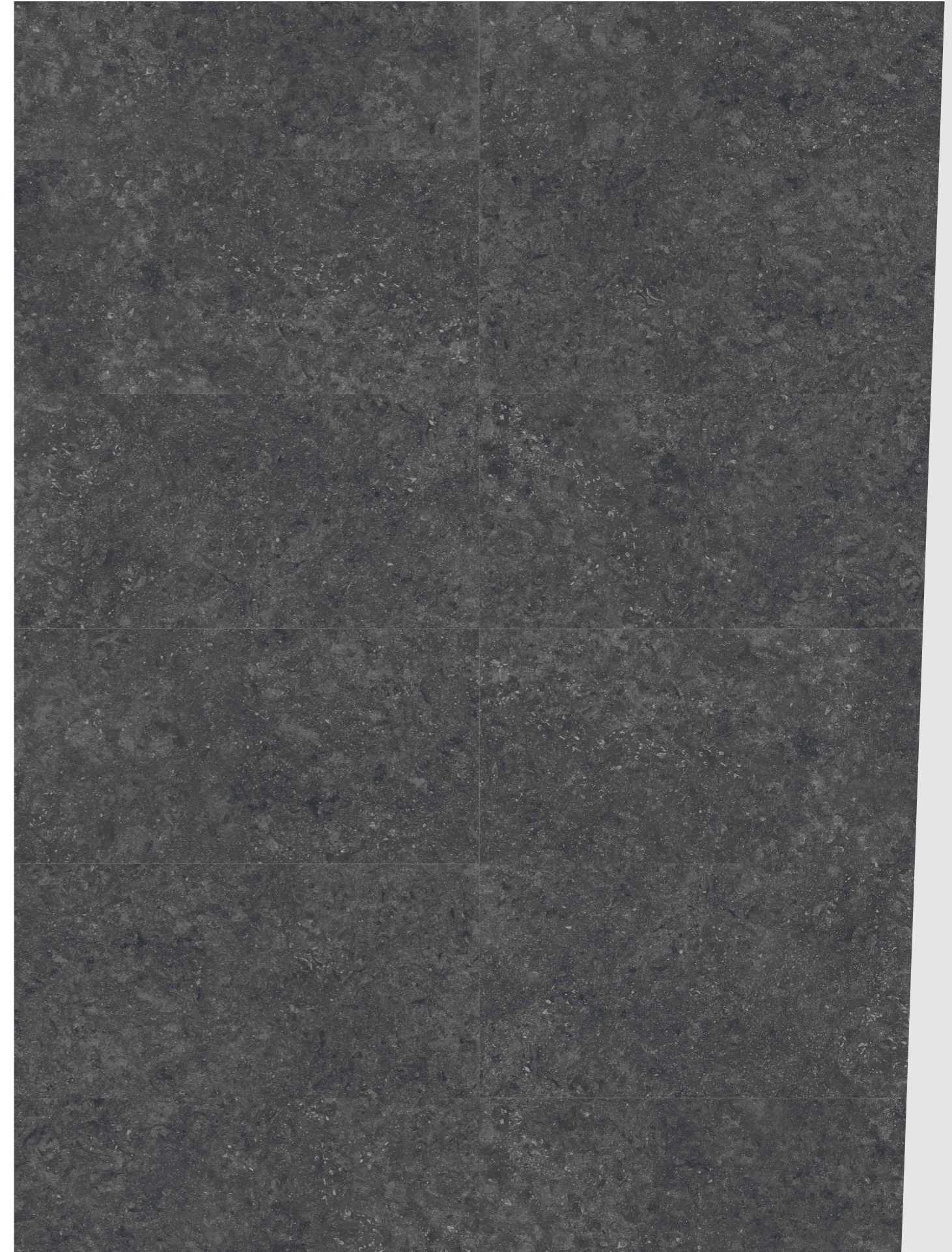
Classement

U4 P3 E3 C2
U4 P4+E3 C2
U4 P3 E3 C2



ASTM C 1028
grp R10 A+B > 0,60 dry / > 0,60 wet
grp R11 A+B+C > 0,60 dry / > 0,60 wet

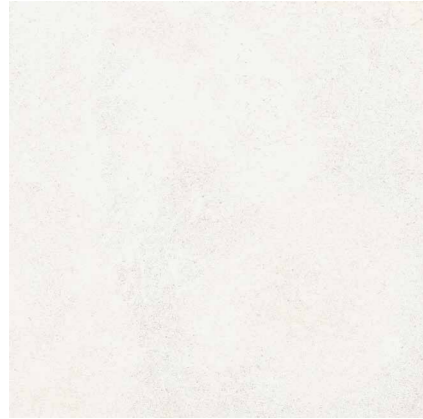
PENDULUM TEST BS 7976
grp R10 A+B > 36 dry / < 25 wet
grp R11 A+B+C > 36 dry / > 36 wet



ARCHISTONE

Colors

Colori | Couleurs | Farben | Colores | Цветов



Limestone Bianco



Limestone Crema



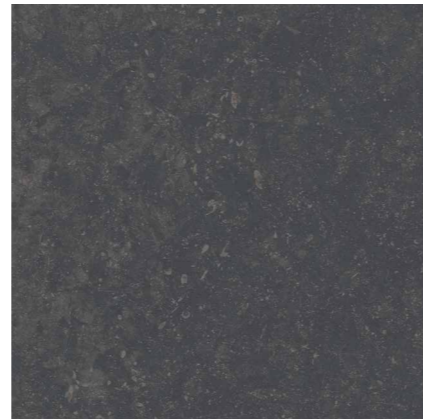
Pietra di Bavaria



Lightstone



Grafite



Darkstone

Sizes | Formati | Formats | Formate | Formatos | Форматы



60x120 24"x48"



60x60 24"x24"



30x60 12"x24"

	nt rt	grp rt	nt rt	grp rt	nt rt	grp rt
Limestone Bianco	0050728	0050737	0050711	0050731	0050713	0050732
Limestone Crema	0050758	0050767	0050741	0050761	0050743	0050762
Pietra di Bavaria	0050828	0050837	0050811	0050831	0050813	0050832
Lightstone	0050858	0050867	0050841	0050861	0050843	0050862
Grafite	0050788	0050797	0050771	0050791	0050773	0050792
Darkstone	0050888	0050897	0050871	0050891	0050873	0050892

Special trims

Pezzi speciali | Pièces spéciales | Formteile | Piezas especiales | Специальные изделия



Battiscopa

9,5x60

3²⁴/₃₂"x24"

8 pcs/box

nt



Gradone costa retta

33x60x3,2x3

13"x24"x1⁸/₃₂"x1⁶/₃₂"

4 pcs/box

nt



Angolo gradone costa retta

33x33x3,2x3

13"x13"x1⁸/₃₂"x1⁶/₃₂"

2 pcs/box

nt



Elemento L

15x60x6

6"x24"x2¹²/₃₂"

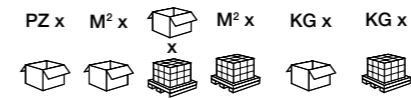
4 pcs/box

grp

	nt	nt	nt	grp
Limestone Bianco	0050717	0050719	0050720	0050735
Limestone Crema	0050747	0050749	0050750	0050765
Pietra di Bavaria	0050817	0050819	0050820	0050835
Lightstone	0050847	0050849	0050850	0050865
Grafite	0050777	0050779	0050780	0050795
Darkstone	0050877	0050879	0050880	0050895

Packaging

Imballi | Emballages | Verpackungen
Embalajes | Упаковки



	PZ x	M² x	M³ x	M² x	KG x	KG x
60x120 24"x48"	2	1,44	30	43,20	29,52	885,6
60x60 24"x24"	4	1,44	30	43,20	29,52	885,6
30x60 12"x24"	7	1,26	40	50,40	25,83	1033,2

Suggestion for laying

Consigli per la posa | Conseil pour la pose | Verlegetipps
Consejos de colocación | Рекомендации по укладке

Considering the characteristics of this series we suggest: 2-3 mm joint.

Viste le caratteristiche della serie si consiglia: fuga 2-3 mm.

Vu les caractéristiques de la série, nous conseillons : joint 2-3 mm.

Im Hinblick auf die Eigenschaften der Serie es empfiehlt sich: 2-3 mm Fuge.

Debido las características de la serie, se recomienda la colocación con juntas mínimas de 2-3 mm.

В силу характеристик данной серии рекомендуется: шов 2-3 мм

Grouting color

Colore della fuga | Couleur de joint
Farbe der Fuge | Color de escape | Цвет шов

Limestone Bianco	Kerakoll 20	Mapei 130
Limestone Crema	Kerakoll 21	Mapei 131
Pietra di Bavaria	Kerakoll 23	Mapei 132
Lightstone	Kerakoll 06	Mapei 110
Grafite	Kerakoll 09	Mapei 113
Darkstone	Kerakoll 11	Mapei 114

For more detailed information on the technical characteristics of the material, contact the Cerdisa Quality Office through the website www.cerdisa.it. | Per richiedere informazioni più approfondite sulle caratteristiche tecniche del materiale, contattare l'Ufficio Qualità di Cerdisa attraverso il sito internet www.cerdisa.it. | Pour obtenir des informations plus approfondies sur les caractéristiques techniques du matériau, contacter le Bureau Qualité de Cerdisa à travers le site Internet www.cerdisa.it. | Um nähere Informationen zu den technischen Merkmalen des Materials zu erhalten, wenden Sie sich bitte über die Website www.cerdisa.it an die Qualitätsabteilung von Cerdisa. | Para solicitar información más detallada sobre las características técnicas del material, póngase en contacto con el Departamento de Calidad Cerdisa a través del sitio web www.cerdisa.it. | Для получения дальнейшей информации по техническим характеристикам материала обращайтесь в Отдел качества компании Cerdisa на веб-сайте www.cerdisa.it.



CERDISA



Via Statale 118, 42013 Sant'Antonino di Casalgrande (RE) Italy
T +39 0536 992511 / F +39 0536 993757
www.ceramichecerdisa.it

#Absolute Spaces