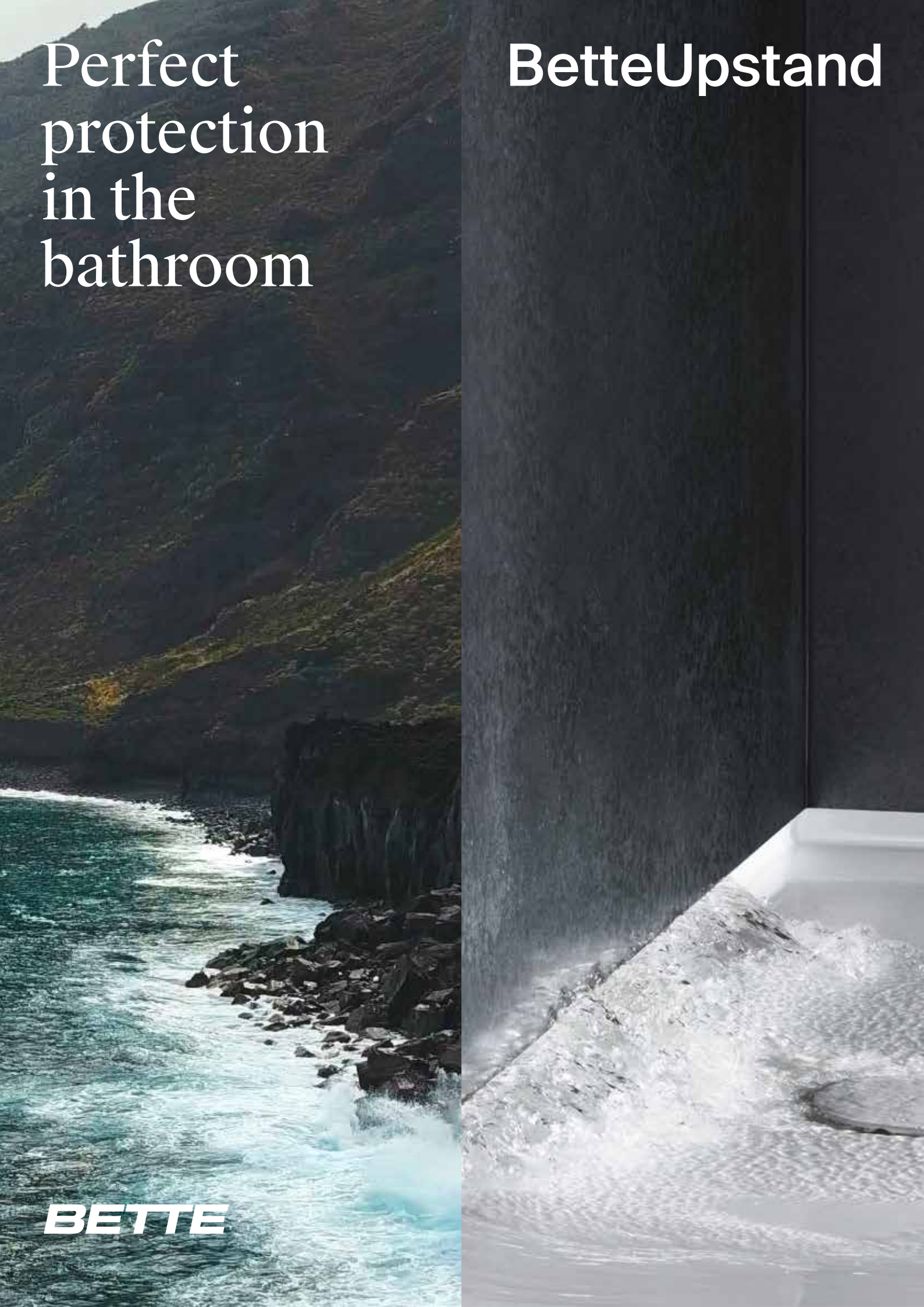
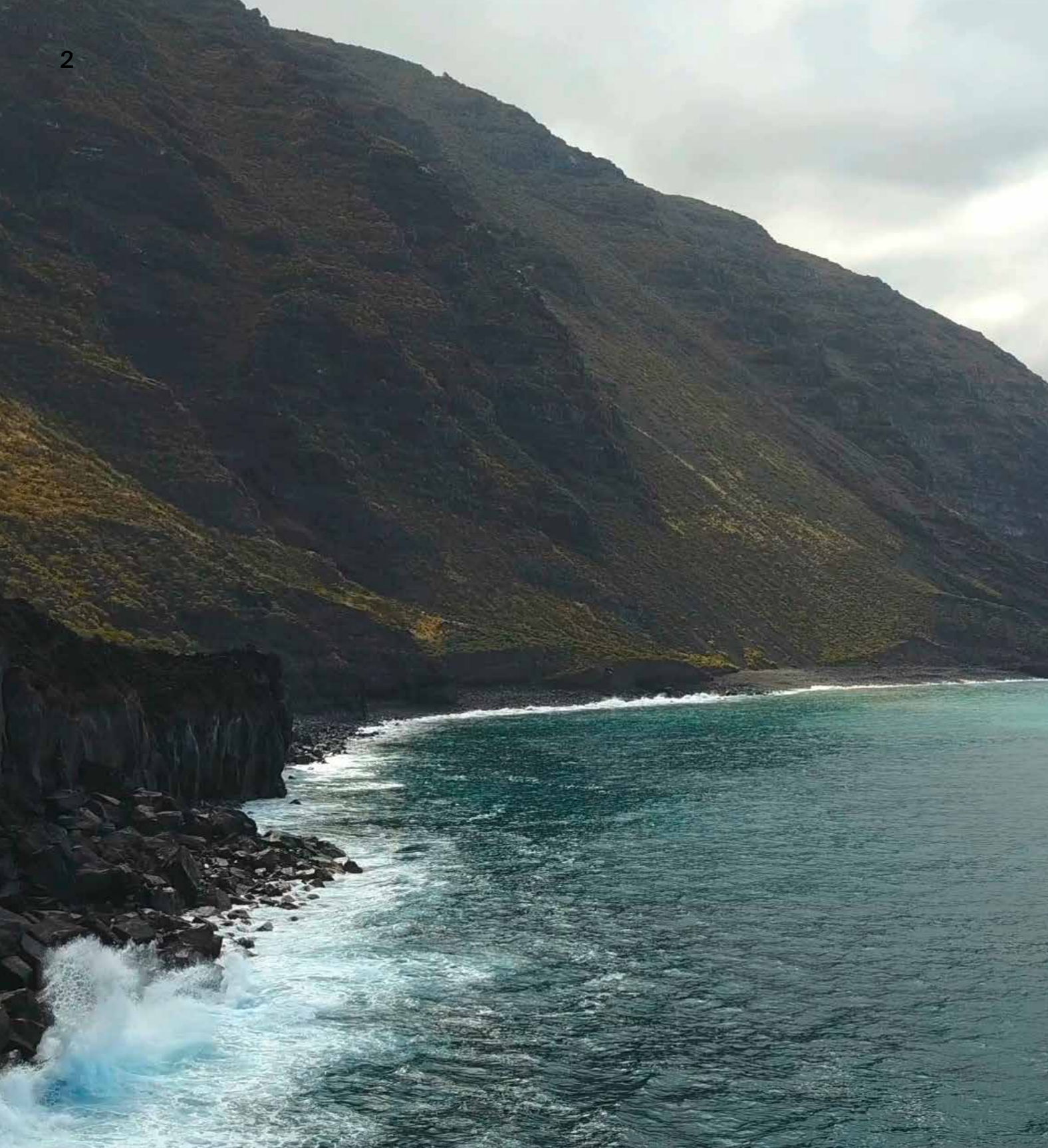


Perfect
protection
in the
bathroom

BetteUpstand

BETTE





Rocks that are millions of years
old separate land and water.

In nature, water
encounters
insurmountable barriers.
We asked ourselves how
we could protect the
architecture in the
bathroom as effectively.

Hygienic, reliable and maintenance- free

Porous silicone joints are a problem in many bathrooms. Water can penetrate the brickwork through them and cause tremendous damage.

The solution: a silicone-free combination of glazed titanium steel, the BetteUpstand. It extends the edges of baths and shower trays to below the splashback, eliminating the need for silicone.




Glazed
Titanium-Steel

30
Years
Warranty*¹


Sustainable
Quality


Made in
Germany

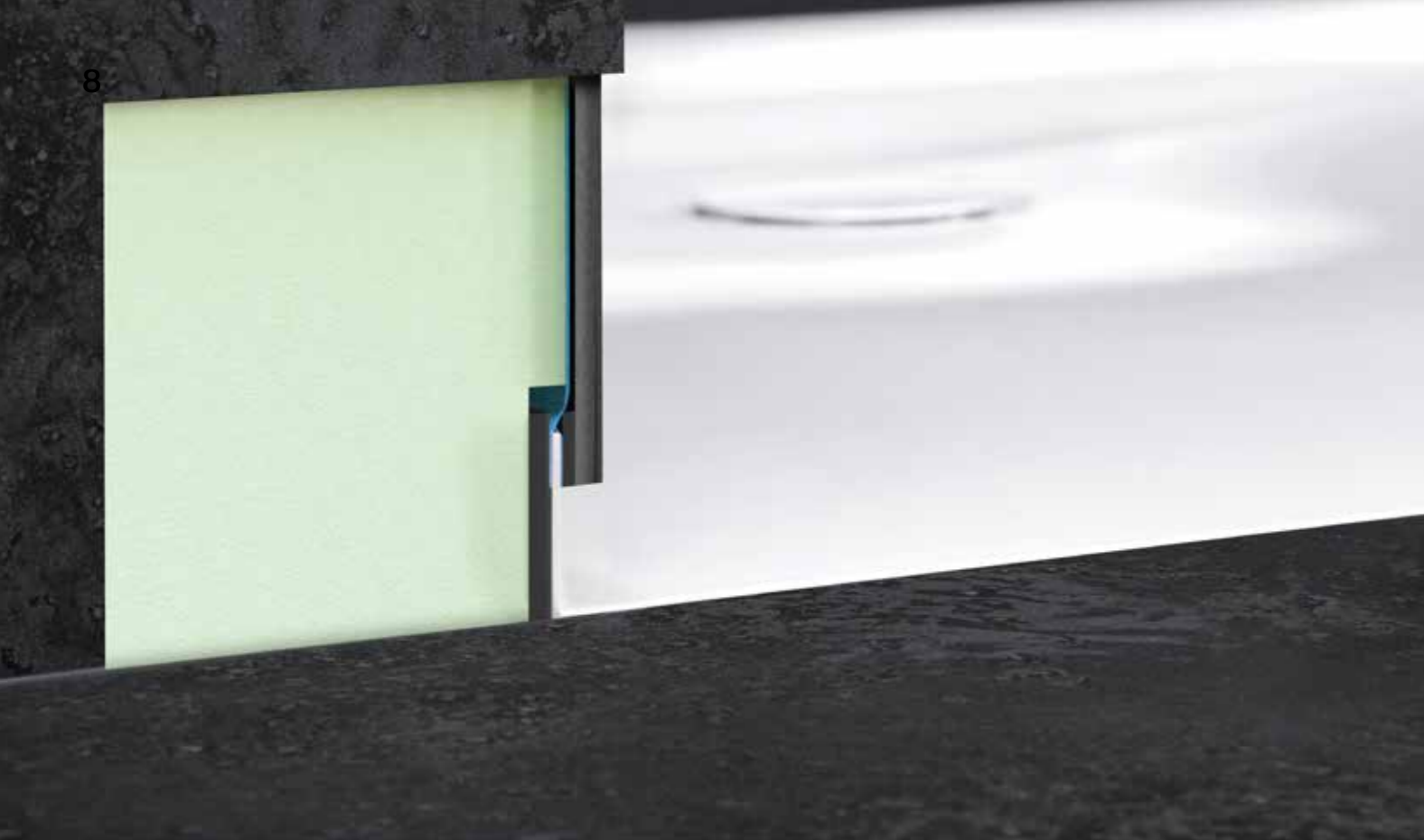
*¹ Further information on
our guarantee terms
at www.my-bette.com

Elegant, hygienic and economical



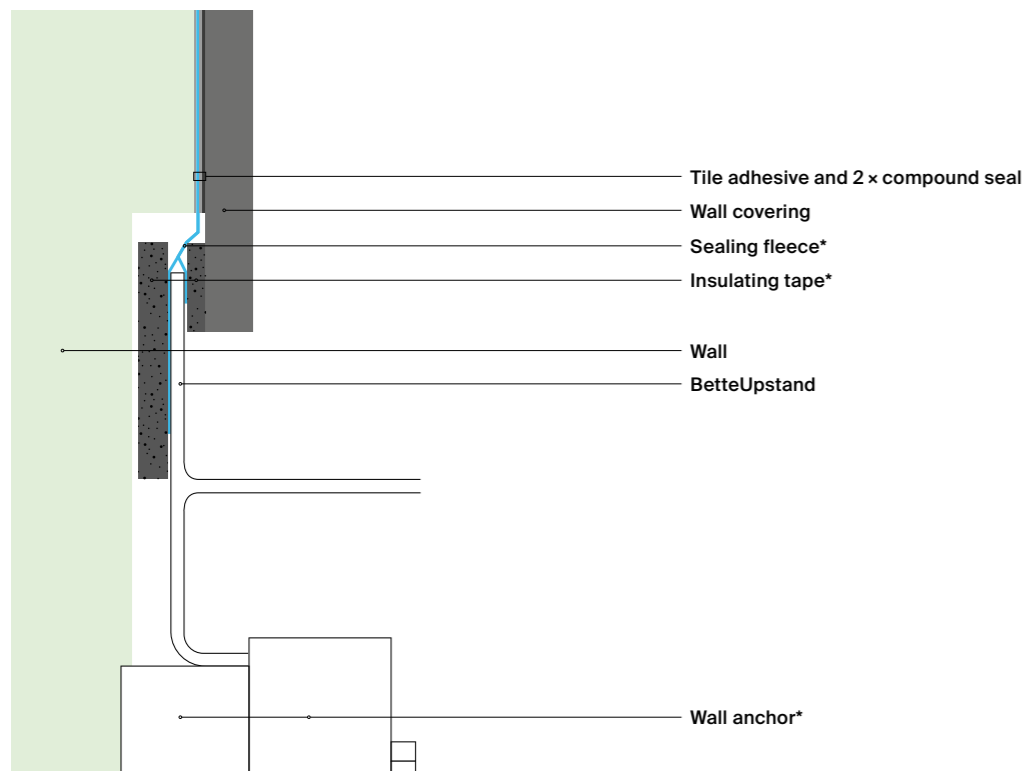
Build in durability and put an end to tedious maintenance of the joints.

	Advantages of the BetteUpstand	Disadvantages of silicone joints
Surface	- glass-like surface	- real dirt traps
Hygiene	- bacteria are unable to adhere	- good breeding ground for germs and bacteria - a possible target for mould
Cleaning	- resistant and easy to keep clean	- difficult to clean
Protection against water	- glazed titanium steel is completely waterproof	- porous joints cause water damage
Costs for repairs	- less expensive in the long term as there are no silicone joints to replace	- repairs are tedious and expensive



Waterproof connection

For the BetteUpstand, the titanium steel bath rim is extended by 35 mm, the return is angled and glazed, and tiled over during installation.



* Included in the delivery

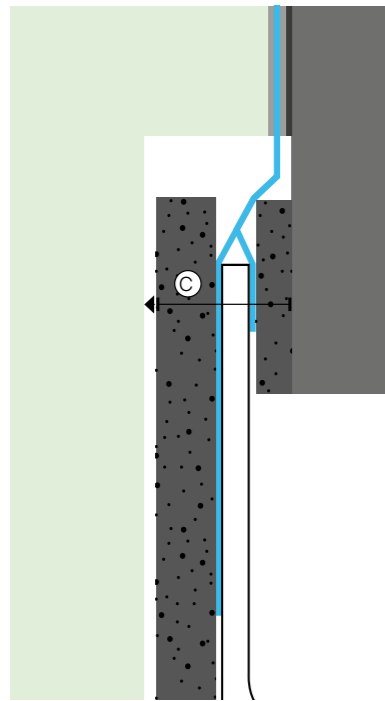
Tested waterproof to DIN 18534

Under DIN 18534, baths and shower trays must be sealed in a special way. Silicone is not enough. In addition to the use of conventional sealing tapes, the building regulation calls for the upstand as a standard solution. In order to check the seal on the BetteUpstand, it was subjected to endurance testing at Kiwa, the independent test institute. This test confirmed the seal of the BetteUpstand based on guideline ETAG 02.



Waterproof
ETAG 022
DIN 18534

Precisely planned, perfectly installed.



1. Preparing the wall

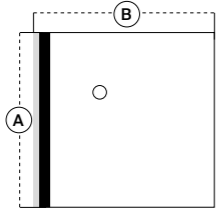
The principle is the same for solid and light-weight constructions. The walls are plastered as usual or clad with 2 lightweight panels. As the bath or shower tray with the BetteUpstand is inset in the wall, the unfinished wall must be filled or recessed by at least 11 mm [Ⓒ].

Establishing the shell dimension

To establish the shell dimension, please use the external dimensions of the bath and add 5 mm to the outer dimensions of the sides of the upstand.

Example 5 mm:

Wall installation

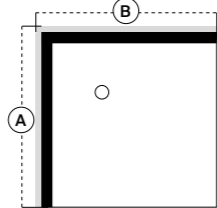


The BetteUpstand is on the left side on dimension A.

$$A = 900 \text{ mm}$$

$$B = 900 \text{ mm} + 5 \text{ mm}$$

Corner installation

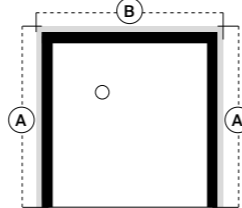


The BetteUpstand is on the left side on dimension A and at the top on dimension B.

$$A = 900 \text{ mm} + 5 \text{ mm}$$

$$B = 900 \text{ mm} + 5 \text{ mm}$$

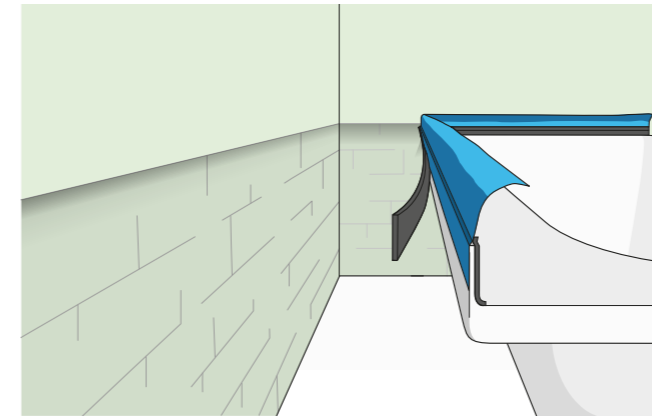
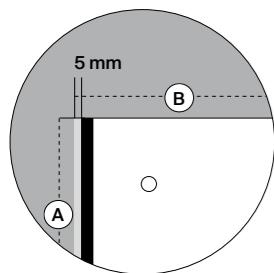
Niche installation



The BetteUpstand is on the left and right sides on dimension A and at the top on dimension B.

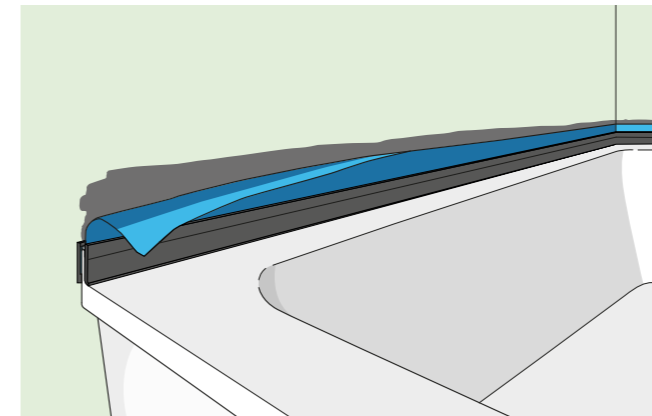
$$A = 900 \text{ mm} + 5 \text{ mm}$$

$$B = 900 \text{ mm} + 5 \text{ mm} + 5 \text{ mm}$$



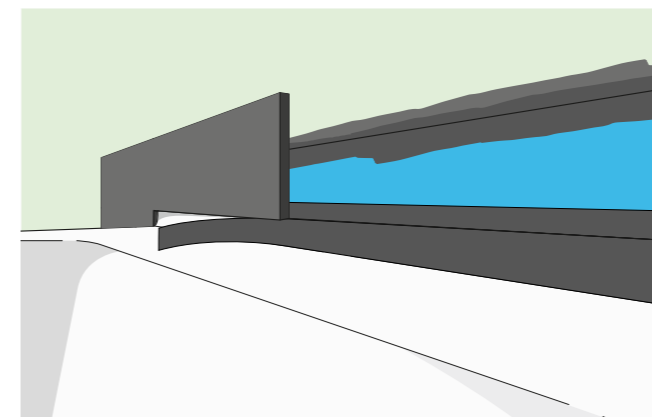
2. Preparing the bath

Glue the insulating tape to the back of the sealing fleece that was fitted at the factory.



3. Fixing

Align the bath or shower tray, and fix with the bath anchors (included). Then work the sealing fleece into the compound seal with water-proofing filler.



4. Finish

Ensure that the tile ends flush with the insulating tape. The BetteUpstand is tiled over to about 12 mm.



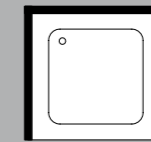
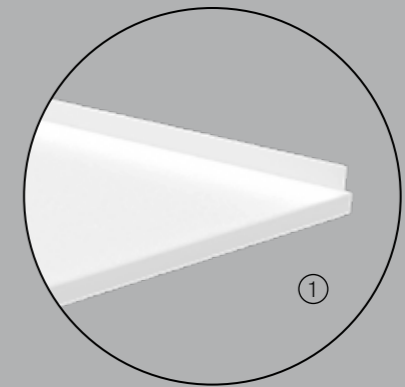
→ BetteUpstand installation film

Made-to-measure for any room situation

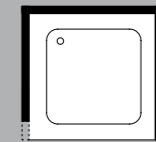


Shortened upstand

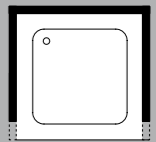
The BetteUpstand can also be specifically adapted for corners and niches where the wall does not continue. We recommend setting the upstand back by 10 mm. The front can then be neatly tiled over and the clear joint line of the splashback is retained. The sides of the bath and shower tray on which BetteUpstand is to be shortened are determined by the individual installation situation. Bette will shorten the upstands for one or both sides, on request.



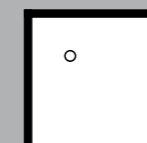
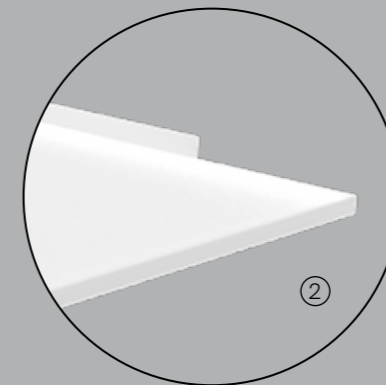
Shortened on right



Shortened on left



Shortened on both sides



Cut to size

Upstand to measure

So the benefits of BetteUpstand can be enjoyed even in rooms with unusual dimensions, upstands can be individually adapted for baths, shower trays and shower areas in accordance with a customised drawing. Thanks to this flexibility, the BetteUpstand can be integrated into virtually any bathroom architecture.

Free choice of wall covering

The BetteUpstand can be tiled in the classic manner or installed with seamless walls in glass or waterproof HPL composite panel.

- ① HPL panel
- ② Glass
- ③ Tile



Practical tip:

If using cut fine stoneware or glazed tiles, we recommend the use of an end rail.

Versions for the installation of shower screens

Shower screens with hinges

with wall extension



The hinge goes in front of the trimmed tile (no additional joints)

without wall extension



with shortened upstand and trimmed tile

Shower screens with profile

with wall extension



A small piece of tile is placed behind the shower screen in order to close the hollow space

Frameless with U-profile

with wall extension



The U-profile is surrounded by the tiles

without wall extension



Shortened upstand with a U-profile shower screen

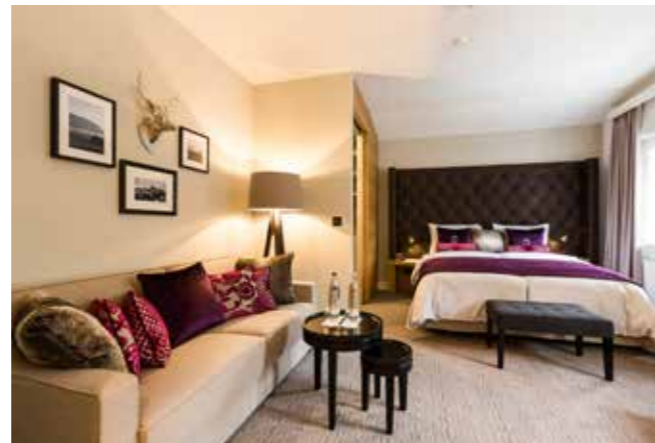


Hotel Brunnenhaus Schloss Landau

Hotel Brunnenhaus Schloss Landau is a 25-room establishment in Landau near Bad Arolsen. It belongs to the H-Hotels AG group, and opened in October 2017. The hotel was constructed during the conversion of the former well house that, together with the gateway arch and a large shed, are all part of the Landau Castle complex. The guest bathrooms within these venerable walls are furnished with Bette shower areas that, thanks to the upstand, provide an excellent seal and thus the best protection against water damage.

Rooms:
25

Opening:
October 2017



Photos: Karsten Socher Fotografie

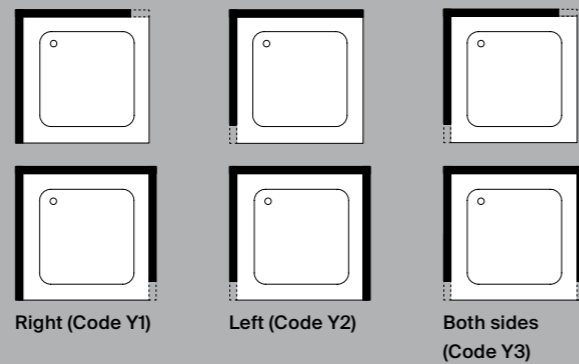
Constructive protection for historic structures



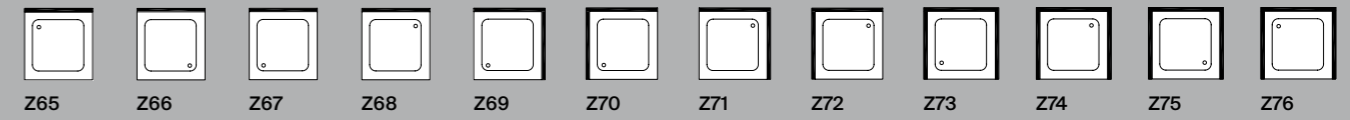
Variety of models and dimensions

— BetteUpstand
 - - - Shortened to size

Shortened for corner and niche installations of baths, shower trays and shower areas BetteFloorSide



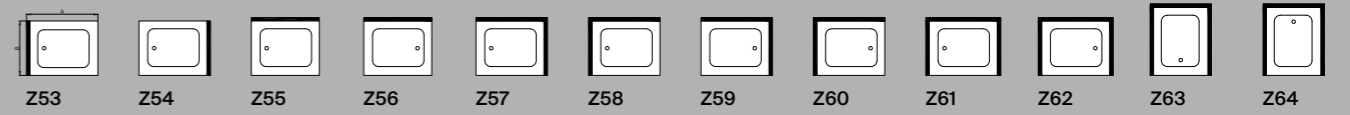
Square shower trays with side dimensions < 1000 mm



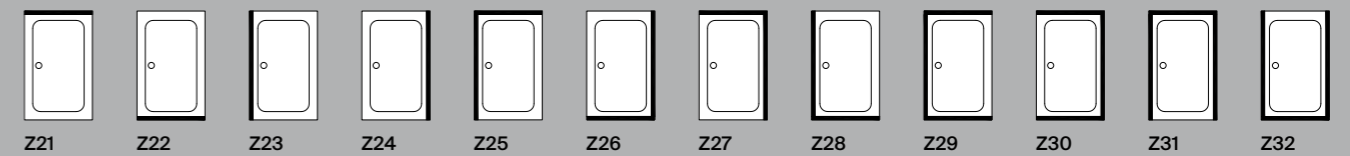
Rectangular shower trays with side dimensions < 1000 mm



Rectangular square shower trays with side outlet, side dimension ≥ 1000 mm < 1600 mm



Rectangular and square shower trays with side outlet, side dimension ≥ 1600 mm, shower areas BetteFloor Side



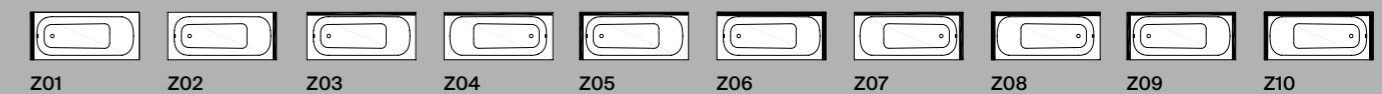
Corner shower trays



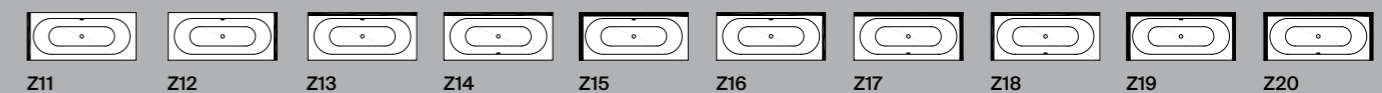
Caro shower trays



Baths with the outlet at the foot end



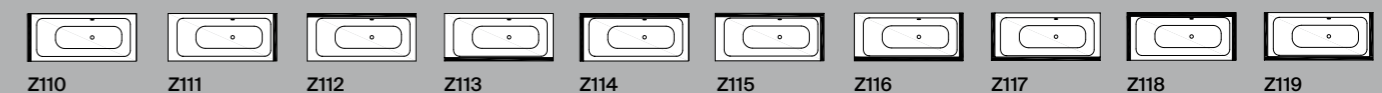
Baths with a central outlet



Baths with foot end right, overflow front (BetteComodo, BetteOcean, BetteSelect)



Baths with foot end right, overflow rear (BetteComodo, BetteOcean, BetteSelect)



Next generation material: Glazed Titanium-Steel

We believe in quality that lasts.





Bette GmbH & Co. KG
Heinrich-Bette-Straße 1
33129 Delbrück
Germany
T +49 5250 511-0
F +49 5250 511-130
international@bette.de
www.bette.de

www.bette.de/betteupstand

** For installations by qualified HVAC tradespeople, we will grant an extended warranty of 30 years on our enamelled bathroom products, as stated in our warranty certificate.

EN 04/2021 • Subject to model amendments, production-related modifications and tolerances, printing and general errors.

