

# **EXTRA LIGHT**

## **installation and maintenance**



# EXTRA LIGHT INSTALLATION AND MAINTENANCE

## - Characteristics of the surface and choice of adhesive and grout.

To ensure excellent adherence, the surface must always be uniform and light colored, flat, dry, compact and free of cracks. In the absence of these requisites, we recommend smoothing the surface with a coating of suitable material. The adhesive and grout must be chosen on the basis of the type of surface (wood, metal, plasterboard, plastered concrete, etc.) and use envisaged (bathroom, pool, kitchen, sauna, etc.). For surfaces in concrete or traditional plaster, Florim recommends the use of adhesives in class C2TE (standard EN 12004). To valorize the color effects obtained with the transparency of the material, especially in the lighter shades, we recommend using white adhesives and grout. It is possible, however, for specific project and esthetic requisites, to lay the tiles using tinted products.

## - Laying the tiles

To ensure an even spread of the adhesive over the entire surface of the tile, we recommend applying the adhesive in a sequence of two steps: first using the smooth side of the trowel, then using the notched side (3-4 mm notches).

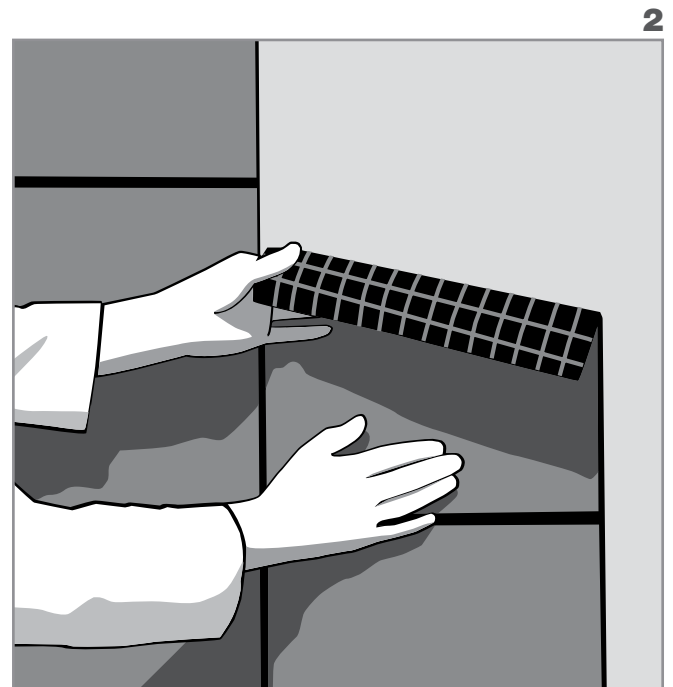
Before laying the sheets of mosaic, make sure the adhesive surface is as smooth as possible.

This will exalt the transparency of Extra Light and eliminate any visual perception of the lines left in the adhesive by the notches on the trowel. (1)



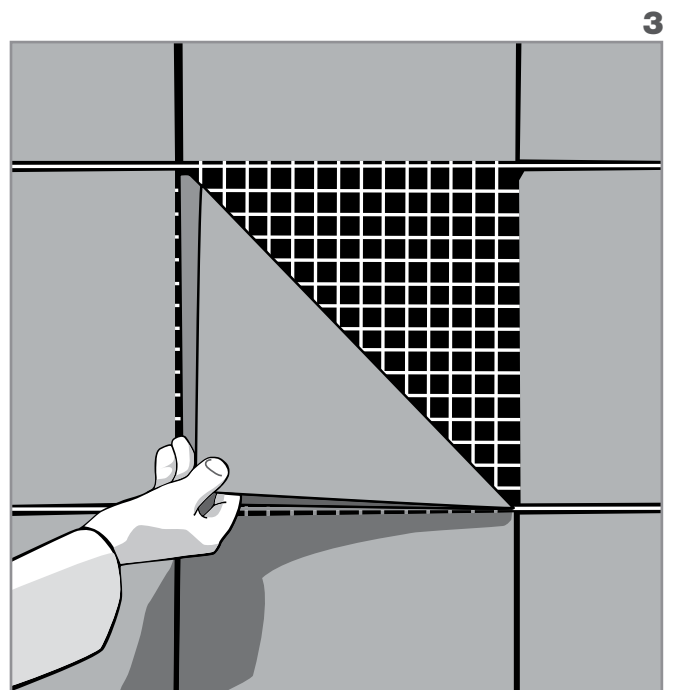
Now proceed to apply the sheets, taking care to lay them paper side up. (2)  
During this step, take particular care to align and space the mosaics correctly, and make sure they adhere firmly.

NOTE: The time necessary for perfect adherence will differ depending on the type of adhesive, type of surface and specific conditions of installation (in a damp environment, for example, it will be longer).



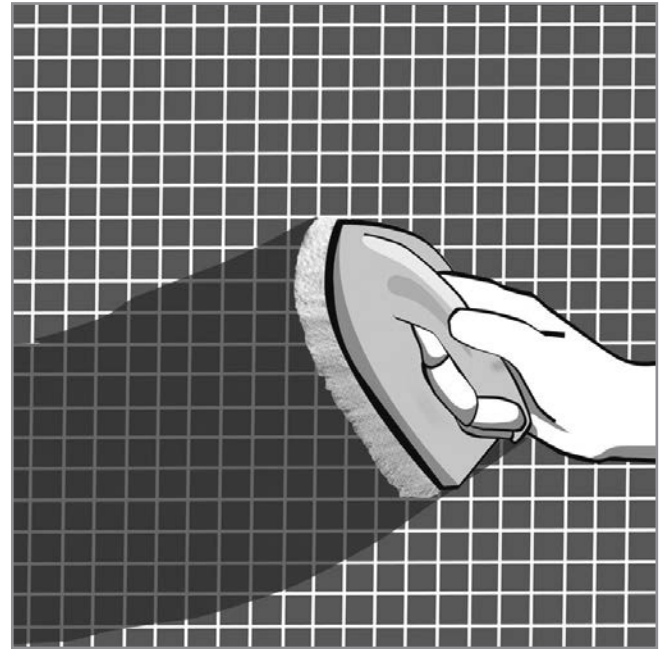
**- Remove the film**

When the adhesive has cured completely (times may vary depending on the adhesive type and ambient temperature in the installation site) peel off the film starting from one of the top corners of the sheet and proceeding diagonally; (3)



# EXTRA LIGHT INSTALLATION AND MAINTENANCE

Remove any accidental residue of adhesive or on the surface of the tiles and make sure that excess adhesive does not ooze out of the spaces between the tiles (in this case remove any excess). (4)



## - Grouting and cleaning.

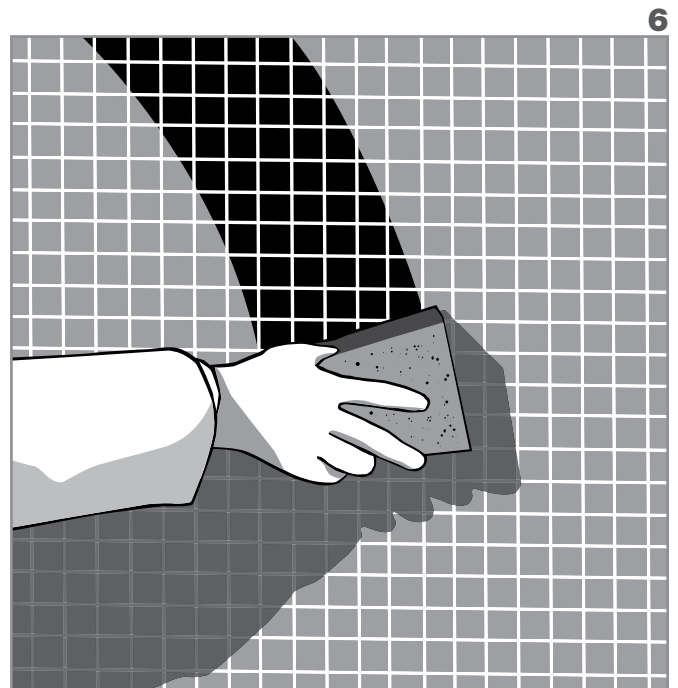
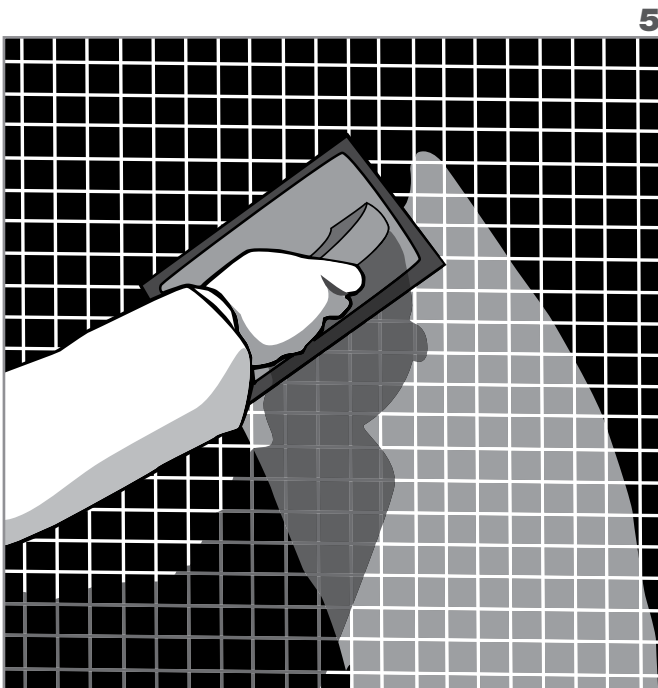
Cement grouts normally available on the market are composed of:

- cement and quartz sand (necessary to ensure the desired mechanical characteristics);
- resins (that act as binders);
- oxides (used for tinting).

Considering the different technical features and granulometry of each of these elements, in preparation of the grout mixture it is essential to follow the manufacturer's instructions exactly and not to add too much water. This will prevent any problems of uneven coloring of the grout after installation.

The grout should be applied diagonally, taking care to fill all the spaces between the tiles completely and removing the excess in the same way, moving diagonally along the mosaic sheet. (5)

Before the grout has dried completely (20-40 minutes depending on the type and environmental conditions), clean the surface with hot water and a soft sponge or felt pad, using rotary motions that give the material its finish and polish. (6)



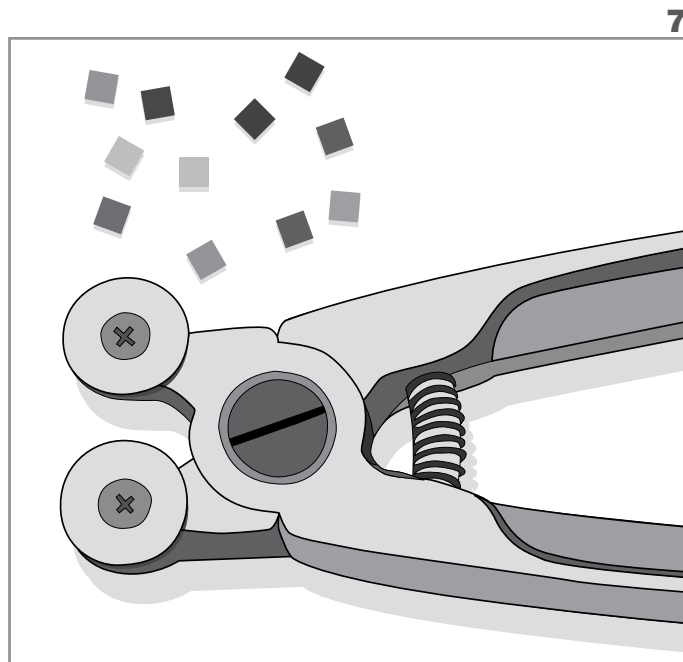
# EXTRA LIGHT INSTALLATION AND MAINTENANCE

Do not rub too hard or use too much water. Extra Light can be grouted using either cement or epoxy grout: the choice depends on the specific use intended for the material.

**NOTE:**  
**Remember that failure to comply with these simple instructions could cause unevenness of the color and efflorescence along the joints**

## - Cutting

When necessary, Extra Light can be cut using ordinary nippers for mosaics in glass. (7)



After cutting, we recommend smoothing the cut edge to bevel it slightly using fine sandpaper.

For cuts of unusual size or shape, we recommend using diamond-tipped disks or saws with diamond-tipped belt.

## - Routine maintenance

For routine maintenance every day, we recommend using hot water and normal detergent for glass, available on the market. Do not use aggressive cleansers or abrasive products.

**EXTRA LIGHT**  
**installation and**  
**maintenance**



Florim Ceramiche S.p.A. con socio unico  
Via Canaletto, 24 - 41042 Fiorano Modenese (MO)  
Tel. +39 0536 840111 / Fax +39 0536 844750 / [www.florim.com](http://www.florim.com)