

Pico, Rombini, Punto, Pico Bois, Bloc  
by Ronan & Erwan Bouroullec

# Technical Features

**Mutina**

# Rombi



Rombini è un percorso fatto di vibrazione ceramica. La collezione presenta due diversi moduli dalla grande forza cromatica, che possono essere combinati tra loro donando agli ambienti un'estetica dal gusto architettonico: Losange, che richiama un mosaico contemporaneo e può essere utilizzato sia a pavimento che a rivestimento, e Triangle, elemento a rilievo pensato specificamente come rivestimento.

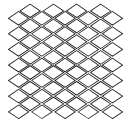
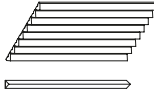
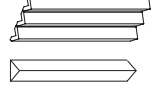
In occasione della riedizione, alle varianti Large e Small già esistenti del modulo Triangle, si aggiunge un nuovo formato Extra Small nelle dimensioni 2x31,5 cm e la nuova finitura Glossy nei colori Blanc, Gris, Rose,

Rombini  
The col  
great c  
give the  
which r  
used o  
diments  
On the  
existing  
by the  
cm, as  
Blanc,

## General information

collection	Rombini
design	Ronan & Erwan Bouroullec, 2015, 2021
production	Industrial + Artisanal
material	LOSANGE: double charge porcelain. TRIANGLE: glazed pressed body.
thickness	TRIANGLE EXTRA SMALL: 16 mm TRIANGLE SMALL, TRIANGLE LARGE: 22 mm LOSANGE: 4,7 mm
nominal sizes	TRIANGLE EXTRA SMALL: 8 pcs 31,5-2-1,6 (12"·1"·0,6"), on net 18x31,5 (7"·12") TRIANGLE SMALL: 5 pcs 31,5-3,5-2,2 cm (12"·1"·1"), on net 18,6-31,5 cm (7"·12") TRIANGLE LARGE: 3 pcs 31,5-6-2,2 cm (12"·2"·1"), on net 18,6-31,5 cm (7"·12") LOSANGE: 27,5-25,7 cm (11"·10")
specification	LOSANGE: – 4 base color Grey, Blue, Green and Red – 4 tone sur tone grout – 1 base color White – 1 tone sur tone grout + 4 grouts matching the 4 base colors With Losange, the shape of the rhombus becomes bigger and turns into a chip of a mosaic. Made of double charge porcelain stoneware, each piece is installed on 27,5x25,7 cm sheets. The chromatic range results to be deep and intense, thanks to the matt surface which gives a natural character to the product. Even in this case the element is available in two versions, through the usage of matching or with contrasting grout, for a stronger vibration. TRIANGLE: – 3 shapes: Extra Small, Small and Large – 5 Matt colors: White, Grey, Red, Green, Blue – 3 Glossy colors: Blanc, Gris, Rose – 2 Glossy colors with craquelé glaze: Vert and Brun With Triangle, the shape of the rhombus is interpreted in its three-dimensional shape, in order to create games of lights and shadow on the surface: the elements, realized in Large, Small and Extra Small versions, seem to arise from the floor and to carry on the wall covering. Triangle is obtain by press in special 3D mold, then glazed and assembled on net. This allow to use Triangle also on concave or convex curved surfaces.
use	LOSANGE: Floor, wall – indoor, outdoor TRIANGLE: Wall – indoor
complementary pieces	LOSANGE: Raccordo TRIANGLE: Terminal Extra Small, Small and Large in all colors and finishing. Listello in all colors and finishing.
awards	Archiproducts Design Award 2016
patents	Registered design n° 002889055-0019/0024 – date of registration: 03/12/2015
category	Losange UNI EN 14411 App G (BIA group) UGI Triangle BIII UNI EN 14411 GL

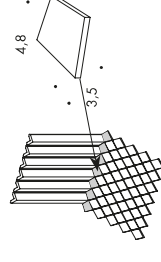
## Sizes

LOSANGE		27,5-25,7 cm 11"·10"
TRIANGLE EXTRA SMALL		8 pcs 31,5-2-1,6 12"·1"·0,6" on net 18x31,5 7"·12"
TRIANGLE SMALL		5 pcs 31,5-3,5-2,2 12"·1"·1" on net 18,6-31,5 7"·12"

complementary pieces

Raccordo  
Losange – Triangle Small  
3,5-4,8 cm  
2"·2"

Chips of mosaics with particular sizes to be used as a connector between Losange and Triangle Small. Product sold in bulk. Available in all colours of the collection.



Terminal  
Extra Small/Small/Large

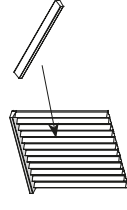
Extra Small:  
26,9· H 1,5· 2,8 cm  
11"· H 1"· 2"

Small:  
25,7· H 1,5· 2,8 cm  
10"· H 1"· 2"

Large:  
24,6· H 1,5· 2,8 cm  
10"· H 1"· 2"

Closing piece available in all colours of the collection. 1 piece of Terminal Small is modular with 7 pieces of Triangle Small. 1 piece of Terminal Large is modular with 4 pieces of Triangle Large.

Extra Small



Small



section

Listello di chiusura

8·31,5·0,6 cm  
3"·12"·1"

Listello with a glazed edge to be used in the corner as wall closure or as a connector between Triangle (Small and Large) and Losange. Available in all colours of the collection.

# Rombini Triangle – Glossy Colors

TRIANGLE EXTRA SMALL



BLANC



GRIS



BRUN



VERT

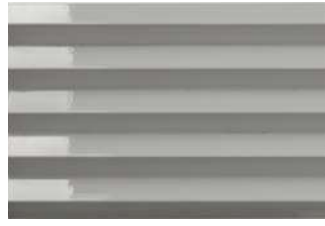


ROSE

TRIANGLE SMALL



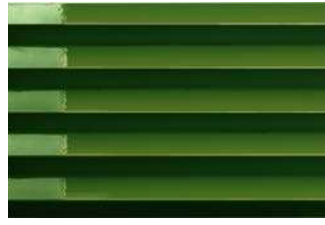
BLANC



GRIS



BRUN



VERT

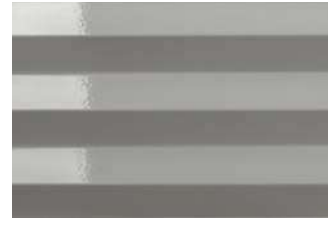


ROSE

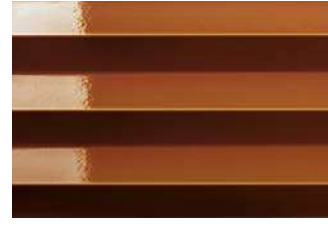
TRIANGLE LARGE



BLANC



GRIS



BRUN



VERT



ROSE

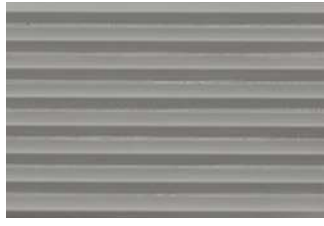


# Rombini Triangle – Matt Colors

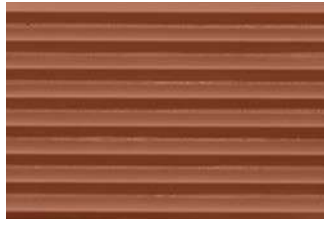
TRIANGLE EXTRA SMALL



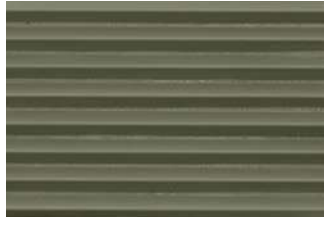
WHITE



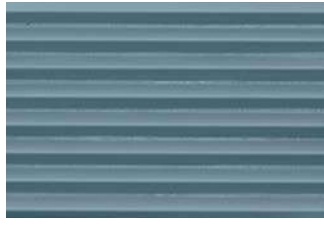
GREY



RED



GREEN

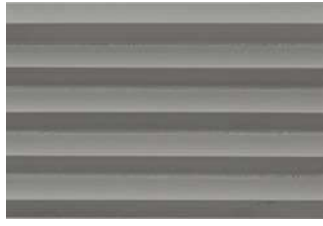


BLUE

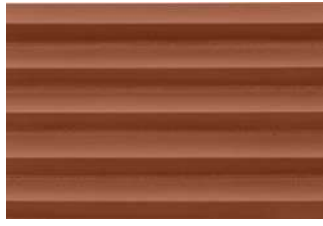
TRIANGLE SMALL



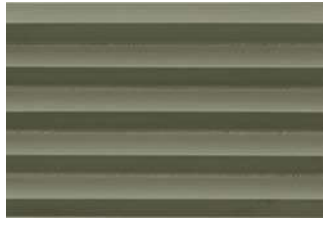
WHITE



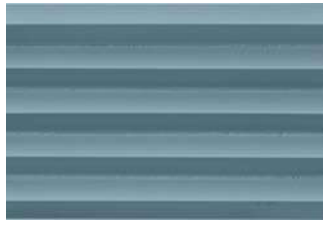
GREY



RED



GREEN

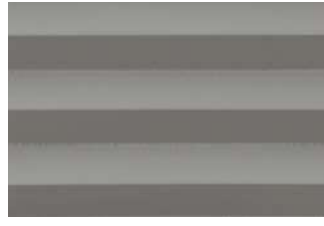


BLUE

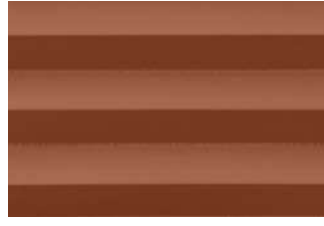
TRIANGLE LARGE



WHITE



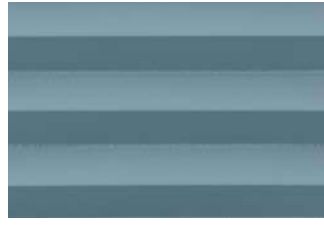
GREY



RED



GREEN

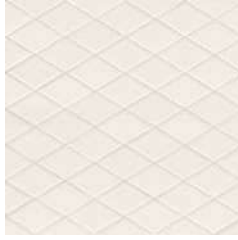


BLUE





# Rombini Losange – Colors



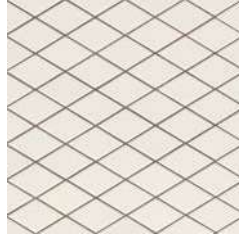
WHITE



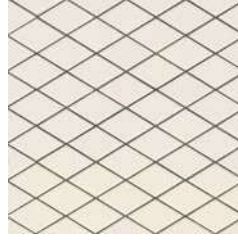
GREY



GREEN



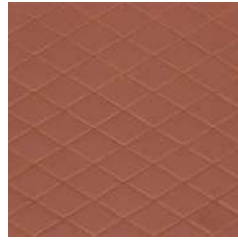
WHITE



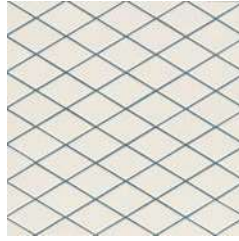
WHITE



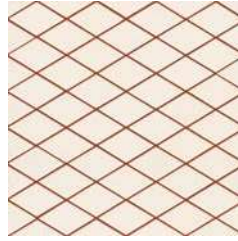
BLUE



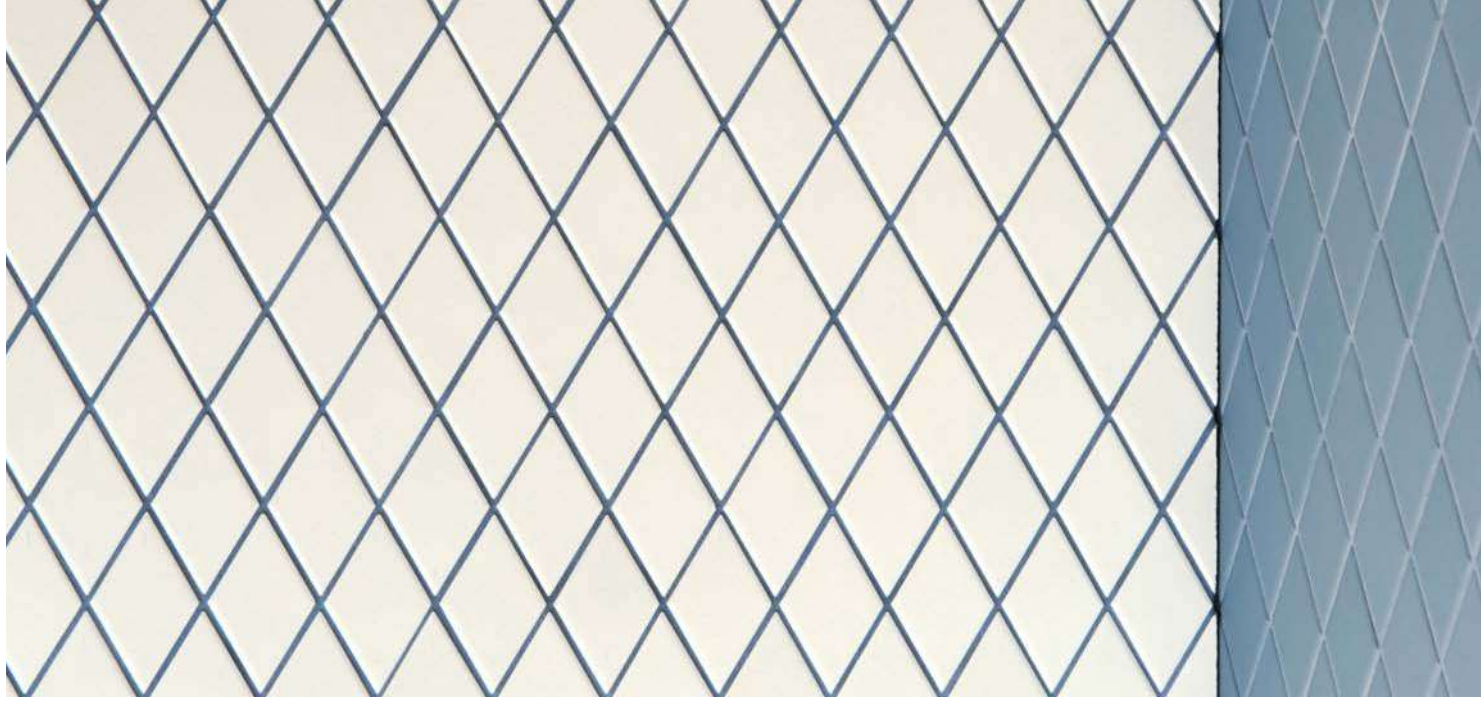
RED



WHITE



WHITE



## Technical features

STANDARD	FEATURES	VALUE REQUIRED	ROMBINI LOSANGE
ISO 10545/3	water absorption	< 0,5%	< 0,5%
ASTM C373		< 0,5%	< 0,5%
ISO 10545/4	breaking strength	Sp>7,5 min 700	in conformity
ISO 10545/6	resistance to deep abrasion	<175 mm3	in conformity
ISO 10545/9	resistance to thermal shock	no visible alteration	resistant
ASTM C484		no samples must show visible defects	unaffected
ISO 10545/12	frost resistance	no visible alteration	resistant
ASTM C1026		unaffected	unaffected
ISO 10545/13	resistance to chemical attacks	no visible alteration	resistant
ASTM C650		unaffected	unaffected
ISO 10545/14	stains resistance	minimum 3	5
DIN 51130-04	slip resistance	medium values R9 6÷10° R10 10÷19° R11 19÷27° R12 27÷35° R13 > 35°	R10
VOC Emission			available upon request
Declaration of Contents			available upon request
EPD			available upon request
SDS			available upon request
BPD3			available upon request
HPD			available upon request

STANDARD	FEATURES	VALUE REQUIRED	ROMBINI TRIANGLE
ISO 10545/3	water absorption	x > 10%	17,0%
ISO 10545/4	breaking strength	Sp>7,5 min 600	in conformity
ISO 10545/9	thermal shock resistance	no alteration	no alteration
ISO 10545/11	crazing resistance	no alteration	no alteration
ISO 10545/13	acids and alkalis resistance	min B	A – B
ISO 10545/14	stains resistance	class 3	class 5
LEED 4.1		-	64% recycled material

## Packing

SIZE	PCS-SQM	PCS-BOX	SQM-BOX
losange 27,5-25,7 cm	14,00	7	0,50
raccordo losange - triangle small 3,5-4,8 cm	-	-	-
triangle extra small on net 18-31,5 cm	17,40	11	0,62
triangle small on net 18,6-31,5 cm	17	9	0,53
triangle large on net 18,6-31,5 cm	17	9	0,53
terminal extra small	-	10	2,69 ml
terminal small	-	10	2,57 ml
terminal large	-	10	2,46 ml
listello 8-31,5-0,6 cm	-	-	-

## CREDITS

Art Direction: Alla Carta Studio

Graphic design: Matteo Pastorio

Text: Mutina

Photography: Studio Bouroullec,

Delfino Sisto Legnani, Modofotografia

Printed and bound in Italy. September 2021.

All the rights are reserved.

Not any part of this work can be reproduced in any way without the preventive written authorization by Mutina. All work is copyrighted © to their respective owners.

To discover more about Mutina

collections visit [mutina.it](http://mutina.it)

Ceramiche Mutina Spa

Via Ghierola Nuova 16

41042 Fiorano MO, Italia

T +39 0536812800

F +39 0536812808

[info@mutina.it](mailto:info@mutina.it)

[www.mutina.it](http://www.mutina.it)

© Mutina 2021



