

CORE BASICS

ORNAMENTA.COM

8 PATTERNS IN
4 COLOR MATCHES
HEXAGONAL
Ø 60 //
GRES PORCELAIN //
NATURAL //

ORNAMENTA®

APPROACH TO DESIGN

*hexagonal tiles part of the heritage
and cultural identity of Morocco*

SUMMARY

COLOURS

pag. 4 | 5

THE COLLECTION

pag. 6 | 7

WHITE + BLACK

pag. 8 | 13

IVORY + TAUPE

pag. 14 | 15

ASHGREY + PEARL

pag. 16 | 17

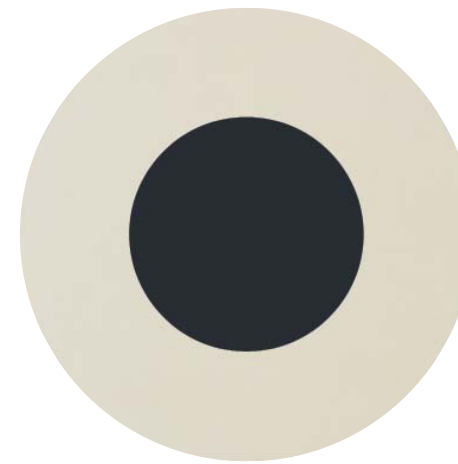
TECHNICAL INFO

pag. 21 | 25

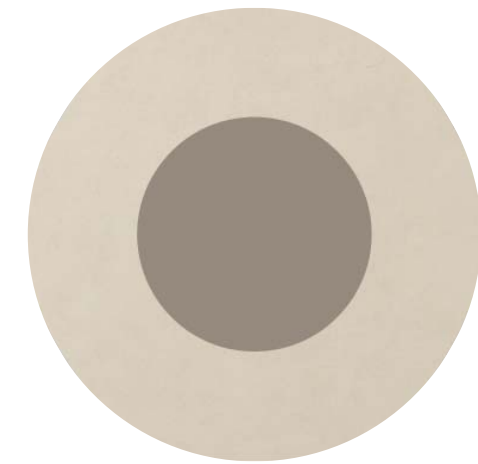
CREDITS

pag. 26

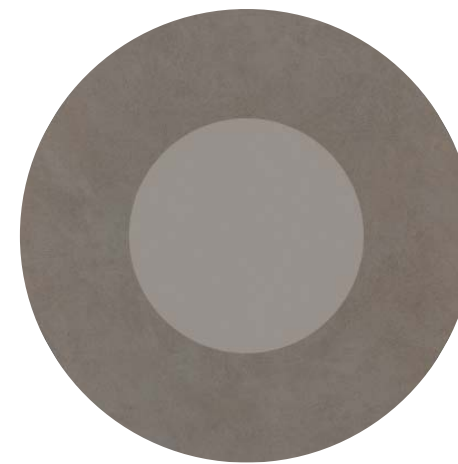
ORNAMENTA.COM



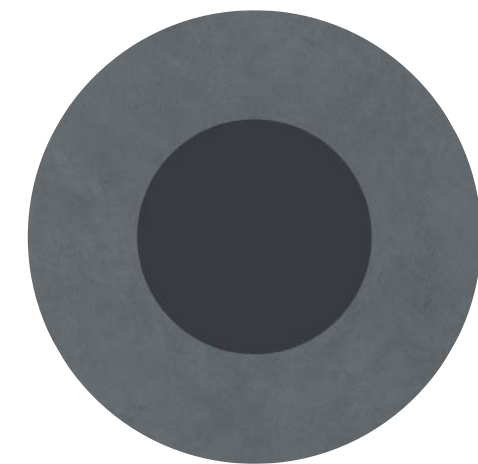
white + black



ivory + taupe

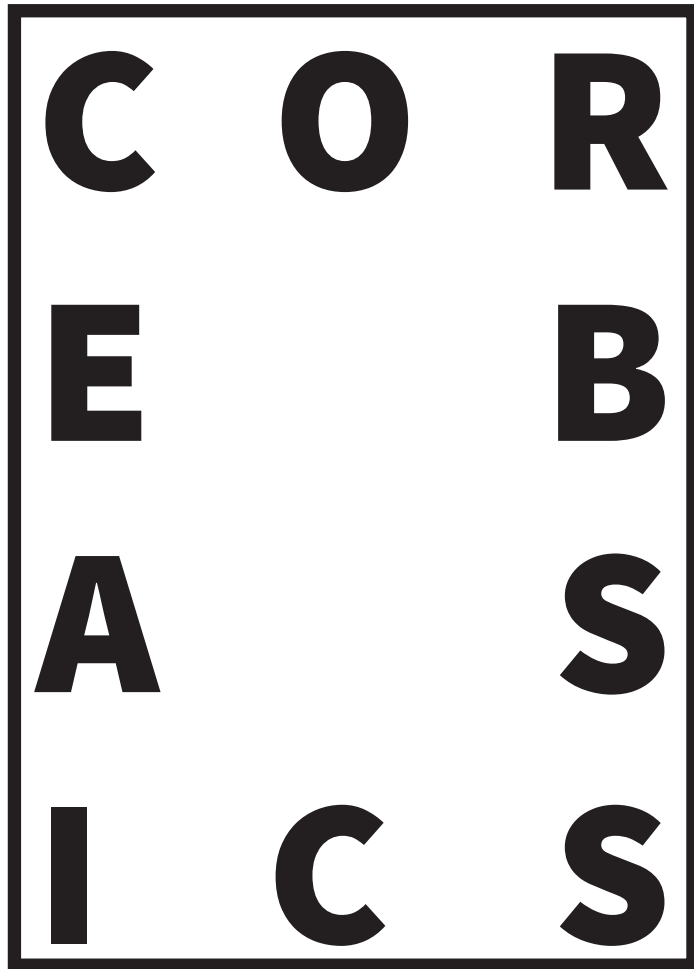


ashgrey + pearl



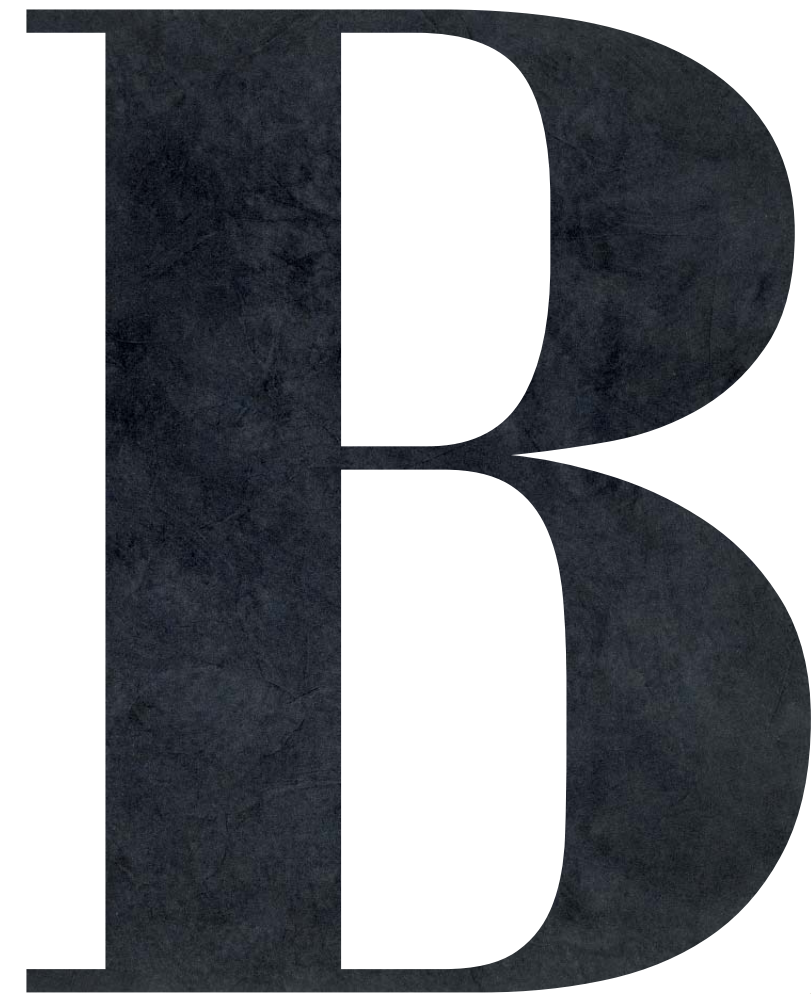
grey + black

*I colori e le caratteristiche estetiche dei materiali illustrati nel presente catalogo sono da ritenersi puramente indicativi.
Colours and aesthetical features of the materials as illustrated in this catalogue are to be regarded as mere indications.



L'esagona della collezione BASICS si amplia da un punto di vista decorativo mediante l'implementazione di una design gallery costituita da 8 pattern declinati in 4 abbinamenti cromatici, le grafiche sono utilizzabili individualmente o possono dare vita a diverse tipologie di layouts.

The hexagon of BASICS collection grows its decorative character through a design gallery of 8 patterns in 4 color matches. The designs can be used as single one or can be combined in different kind of layouts.



BLACK + WHITE

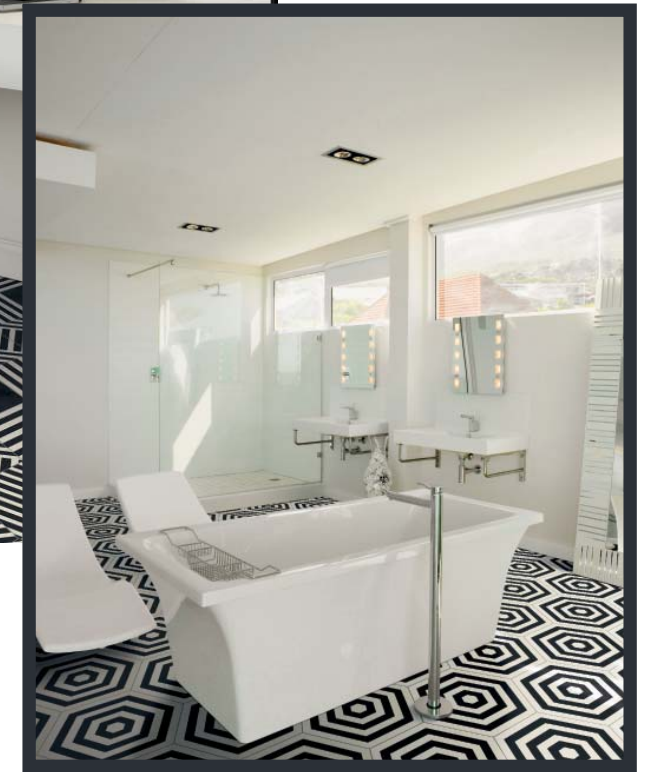
WHITE + BLACK



patchwork white + black

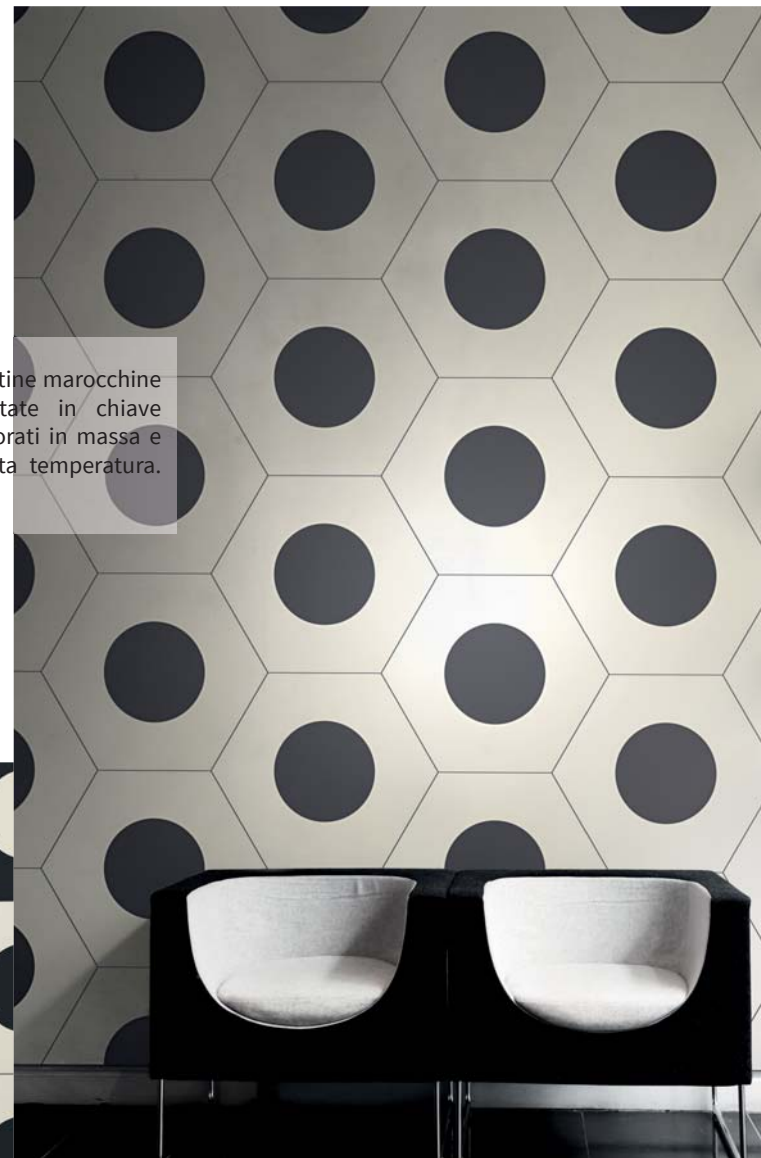


stripes white



target white

L'ispirazione è da ricercarsi nelle classiche cementine marocchine chiamate anche "encaustic tiles", re-interpretate in chiave contemporanea su basi di gres porcellanato colorati in massa e passaggi monocromi di smalti serigrafici ad alta temperatura. Tradizione e innovazione.



The inspiration came from classic Moroccan cement tiles, re-invented in a contemporary look on a base of colored body porcelain gres with applications of high temperature screen printed monochrome glaze at. Tradition and innovation.

GREY + BLACK



patchwork grey + black



+ I AM PATCH WORK

Patchwork che miscelano i soggetti grafici senza seguire un criterio classico ma lasciandolo, almeno apparentemente, al caso.

Patchworks that mix graphics subjects without following classic criteria, but leaving them, apparently, to the case.

honeycomb
ivory



IVORY + TAUPE

dot-positive
dot-negative
ivory



A

PEARL + ASHGREY



run-up ashgrey



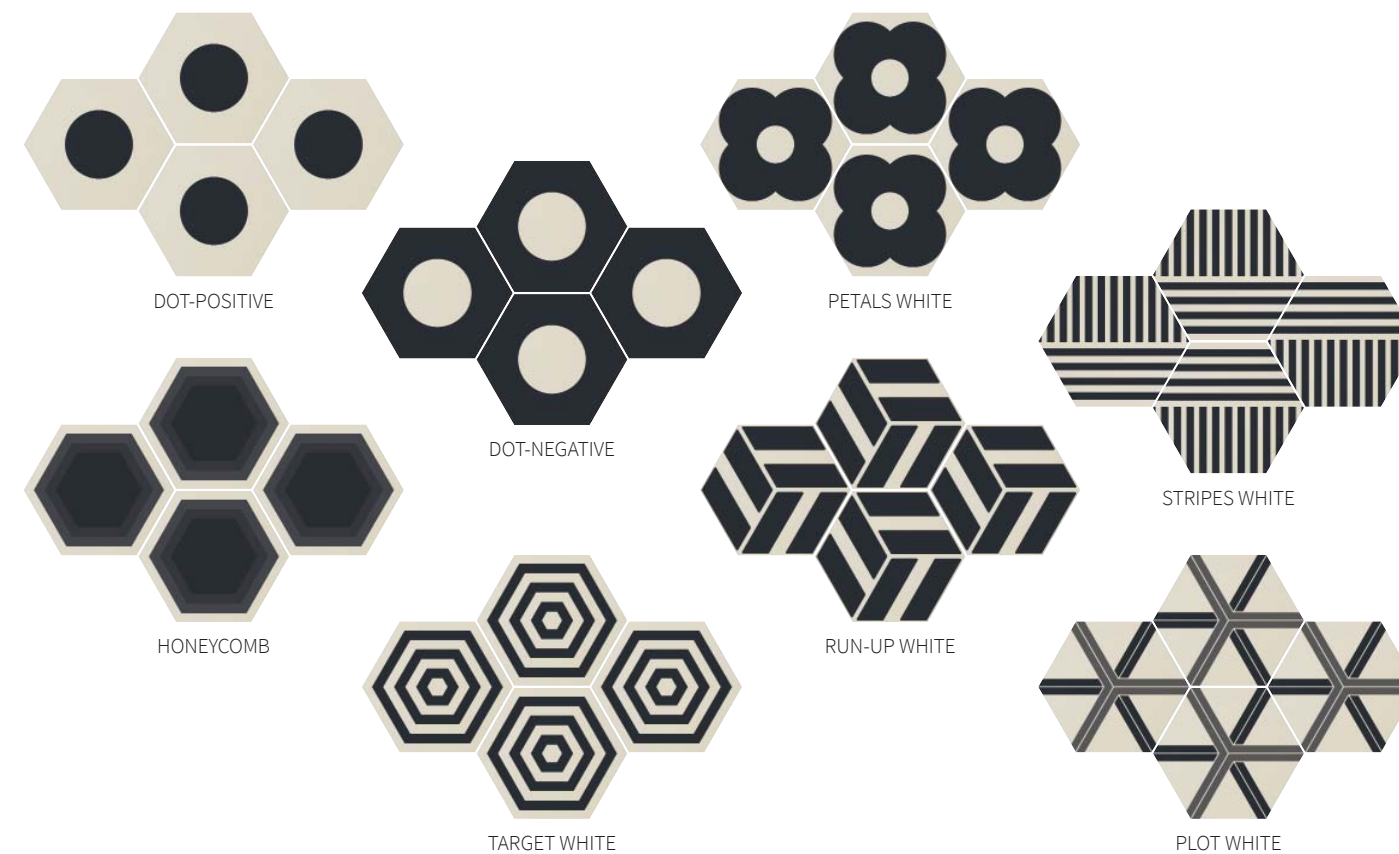
honeycomb ashgrey

COREBASICS

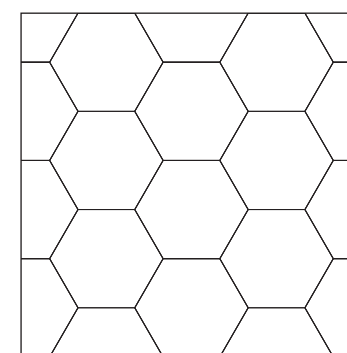
**“PASSION IS THE
KEY ESSENTIAL
FORCE THAT
DRIVES OUR
SUCCESS.
IT DETERMINES
EVERYTHING
THAT WE THINK
AND DO”.**

Richard Ashcroft,
The Founder of Design Inc.

TECHNICAL INFO



SCHEMI DI POSA / LAYOUT SETTINGS



Si consiglia di posare il prodotto utilizzando un distanziale da 2mm.
We suggest to lay the product by using a spacer of 2mm.

MISURE E PESI

weight and dimensions

poids et dimensions

größe und gewichte

medidas y pesos

Dimensione				
Size		Ø 60		
Format		Ø 24"		
Format				
Tamaño				
Spessore				
Thickness		10 mm		
Épaisseur				
Stärke				
Espesor				
Peso				
Weight		5,17 kg		
Poids				
Gewicht				
Peso				
Pezzi per scatola				
Pieces per carton		4		
Pièces par carton				
Stück pro Karton				
Unidades por caja				
Quantità per scatola				
Quantity per carton		0,94 sqm		
Quantité par carton				
Quantität pro Karton				
Cantidad por caja				
Peso per scatola				
Weight per carton		20,68 kg		
Poids par carton				
Gewicht pro Karton				
Peso por caja				
Scatole per paletta				
Boxes per pallet		24		
Cartons par palette				
Karton pro palette				
Cajas por paleta				
Quantità per paletta				
Quantity per pallet		22,56 sqm		
Quantité par palette				
Quantität pro palette				
Cantidad por paleta				
Peso per paletta				
Weight per pallet		526,32 kg		
Poids par palette				
Gewicht pro palette				
Peso por paleta				

Giunto	Stucchi	100 Bianco-White	120 Nero-Black	290 Crema-Cream	103 Bianco Luna-Moon White	133 Sabbia-Sand	136 Fango-Mud	114 Antracite-Anthracite	Grado di variazione cromatica	
Joint	Grouts								Colour shade variation	ASTM C137.1
Joint	Joints								Degré de variation chromatique	V0 - V4
Fugenbreite	Fugenmassen								Grad Der Farbabweichung	V01
Junta	Pasta de rejuntar								Grado De Variación Cromatica	

Avvertenze

Non saranno accolte contestazioni per danni visibili prima della posa. I colori dei materiali illustrati nel presente catalogo sono da ritenersi puramente indicativi. I dati presenti nella tabella "Misure e Pesi" sono aggiornati al momento della stampa del catalogo, pertanto i dati elencati possono subire variazioni.

Advice

Claims on items which have already been laid will not be accepted for any damage visible before laying. Colours of the materials as illustrated in this catalogue are to be regarded as mere indications. The details present in the table "Weight and Dimensions" are updated at the time the catalogue is printed, therefore the datas may change.

Avertissements

Ils ne seront pas acceptées les réclamations pour dommages visibles avant l'installation. Les couleurs des matériaux illustrés dans ce catalogue sont purement indicatives. Les données dans le tableau «poids et mesures» est correcte au moment de l'impression du catalogue, pourquoi les données peuvent être modifiées.

Warnungen

Sie werden nicht vor der Installation akzeptiert Ansprüche auf sichtbare Beschädigungen werden. Die Farben der Materialien, die in diesem Katalog dargestellt sind rein indikativ. Die Daten in der Tabelle "Maße und Gewichte" ist korrekt zum Zeitpunkt der Druck des Katalogs, deshalb werden die aufgelisteten Daten geändert werden können.

Advertencias

No se aceptarán reclamaciones por daños visibles antes de la instalación. Los colores de los materiales descritos en este catálogo son meramente indicativos. Los datos de los "Pesos y Medidas" tabla es correcta en el momento de imprimir el catálogo, por lo tanto, los datos enumerados pueden ser alterados.

CARATTERISTICHE TECNICHE

technical features

caractéristiques techniques

technische eigenschaften

características técnicas

	NORMA STANDARD	VALORI LIMITI PREVISTI ESTABLISHED LIMITS VALEURS LIMITES PRÉVUES VORGESEHENE GRENZWERTE VALORES LIMITE PREVISTOS	VALORI RILEVATI MEASURED VALUES VALEURS MESUREES MESSWERTE VALOR MEDIDO
Lunghezza e larghezza Lenght and width Longueur et largeur Länge und Breite Longitud y anchura		ISO 10545.2	± 0,6%
Rettilineità degli spigoli Straightness of sides Rectitude des arêtes Geradlinigkeit der Kanten Rectitud de los cantos		ISO 10545.2	± 0,5%
Planarità Flatness Planéité Ebenflächigkeit Planeidad		ISO 10545.2	± 0,5%
Assorbimento d'acqua Water absorption Absorption d'eau Wasseraufnahme Absorción de agua		ISO 10545.3 ASTM C373	< 0,5%
Resistenza agli sbalzi termici Thermal shock Choc thermique Thermoschock Choque termal		ISO 10545.9 ASTM C484	Resistente Resistant Résistant Beständig Resistente
Resistenza agli attacchi chimici Chemical resistance Résistance chimique Chemische Resistenz Resistencia química		ISO 10545.13 ASTM C650	Conforme Complies with the standards Conforme aux normes Anforderungenerf erfüllt Conforme con las normas
Resistenza all'abrasione Deep resistance Résistance à l'abrasion Abriebfestigkeit Resistencia a la abrasión		ISO 10545.7 ASTM 1027	100 PEI 0 150 PEI I 600 PEI II 750 - 1500 PEI III 2100 - 6000 - 12000 PEI IV > 12000 PEI V PEI III
Resistenza alle macchie Stains Resistance Résistance aux taches Fleckenbeständigkeit Resistencia a las manchas		ISO 10545.14 ASTM CC1378	≥ Classe 3 ≥ Class 3 ≥ Classe 3 ≥ Klasse 3 ≥ Categoria 3 Classe 3 Class 3 Classe 3 Klasse 3 Categoria 3
Resistenza allo scivolamento Antislip value Résistance au glissement Rutschhemmung Resistencia al deslizamiento		DIN 51130	da R9 a R13 from R9 to R13 de R9 à R13 von R9 bis R13 de R9 a R13 R9
		D-COF	> 0,42 ≥ 0,61
Resistenza al gelo Frost resistant Résistant au gel Frostbeständig Resistente a las heladas		ISO 10545.12 ASTM C1026	Conforme Complies with the standards Conforme aux normes Anforderungenerf erfüllt Conforme con las normas Conforme Complies with the standards Conforme aux normes Anforderungenerf erfüllt Conforme con las normas
Resistenza alla rottura Breaking strenght Résistance à la rupture Biegezugfestigkeit Resistencia a flexión		ISO 10545.4	≥ 28 N/mm ² ≥ 35 N/mm ²

CORE BASICS

CREDITS

EDITION

October 2017
© All rights reserved

ART DIRECTION

Davide Tonelli
info@davidetonelli.it
linkedin.com/in/davidetonelli/

COMPANY

ORNAMENTA® Headquarter
Via Mosca, 1 - 41049
Sassuolo - (MO) Italia
T. +39 0536 867411
info@ornamenta.com

ORNAMENTA® Production unit
via Stradone Secchia 29,
42014 Roteglia - (RE) Italia
T. +39 0536 867411

COMMUNICATION & PR.

ORNAMENTA Press Office
press@ornamenta.com

ORNAMENTA.COM

ORNAMENTA®

A.D. Davide Tonelli

ORNAMENTA®
Via Mosca, 1 - 41049
Sassuolo - (MO) Italia
T. +39 0536 867411
F. +39 0536 803937
info@ornamenta.com
IT 00831670369
Gamma Due S.p.A.

ornamenta.com

@ornamentaceramics